



**SANTA CRUZ COUNTY SANITATION DISTRICT  
ANNUAL PRETREATMENT REPORT  
2016**



## **CONTENTS**

### **SANTA CRUZ COUNTY SANITATION DISTRICT PRETREATMENT PROGRAM 2-5**

PROGRAM SUMMARY  
ORGANIZATION CHART  
FOURTH QUARTER SUMMARY

### **PRETREATMENT REPORTING REQUIREMENTS 6-10**

SAMPLING RESULTS  
BASELINE MONITORING  
INDUSTRIAL USER REPORTS  
INDUSTRIAL INSPECTION  
COMPLIANCE AND ENFORCEMENT  
PROGRAM BUDGET  
PRETREATMENT PROGRAM CHANGES  
SEWER SERVICE CHARGES

### **FATS OILS AND GREASE PROGRAM 11-12**

COMMERCIAL SOURCE CONTROL  
RESIDENTIAL OUTREACH

### **PUBLIC PARTICIPATION 13-14**

### **CONCLUSION SUMMARY 15**

### **PRETREATMENT ANNUAL COMPLIANCE REPORT 16-27**

TABLE 1.1 INDUSTRIAL USER REPORT  
TABLE 1.2 DISTRICT WASTEWATER DISCHARGE LIMITATIONS  
TABLE 1.3A INDUSTRY REMOVALS/  
TABLE 1.3B ADDITIONS  
TABLE 2.1 ANNUAL INSPECTIONS COMPLETED  
TABLE 2.2 MONITORING AND COMPLIANCE/ENFORCEMENT STATUS REPORT  
TABLE 2.3 SUMMARY OF PRETREATMENT PROGRAM BUDGET  
ATTACHMENT A: FOURTH QUARTER MONITORING RESULTS  
ATTACHMENT B: RESTAURANT AND LIGHT INDUSTRY INVENTORY  
ATTACHMENT C: ENFORCEMENT RESPONSE AND FINES

## PROGRAM SUMMARY

The Santa Cruz County Sanitation District (District) owns, operates, and maintains a sanitary sewer system that serves a portion of the unincorporated areas of Santa Cruz County. The District sanitary sewer system facilities include approximately 188 miles of gravity sewers, 14 miles of force main, and 36 pump stations. The District does not own nor is it responsible for maintenance or repair of any portion of the sewer service laterals. The District collects and transmits all sewage to the City of Santa Cruz for treatment and discharge. The collection system is enrolled in the statewide general waste discharge requirements for sanitary sewer systems. An inter-jurisdictional agreement approved by the State Regional Water Quality Control Board is used to differentiate the City of Santa Cruz and District Pretreatment responsibilities within the respective jurisdiction. Both the City and the District have Pretreatment staff. The District is required to reflect or mirror any City Pretreatment requirements, ordinances, or codes.

The pretreatment program operates under the Environmental Compliance Unit (ECU) of the Santa Cruz County Sanitation District. The ECU continues to monitor all existing and potential commercial and industrial users by questionnaire, inspection, surveillance monitoring, and compliance sampling when necessary. Industrial users are inspected once per year unless items are identified during the inspection require follow-up. Compliance sampling by ECU staff of Significant Industrial Users (SIUs) occurs twice per year at a minimum. The Sanitation District's pretreatment program has been fully implemented for many years. However, improvements are always being made to ensure the program's continued compliance and efficiency. An Environmental Programs Coordinator manages the approved Pretreatment Program.

This year the pretreatment program has increased efforts to reduce sanitary sewer overflows caused by grease and non-dispersible wipes from both commercial and residential sources. The District developed outreach material that highlights the problems with flushing fats, oil and grease and non-dispersible wipes down the sewer. Additional inspections were conducted in areas with higher FOG loadings in the sewer lines. The largest source of FOG in the sewers continues to be from residential sources. Additional districtwide public outreach was conducted throughout the year. Door to door outreach was conducted in areas that were reported as having high FOG loadings.

There were some staff changes during this reporting period. John Swenson, formerly the District's Wastewater Operations Manager, has retired. He is no longer a "Duly Authorized Employee". The new Wastewater Operations Manager is Beatriz Barranco. Ms. Barranco is now a "Duly Authorized Employee". Colt Esenwein was hired as the Assistant Director of Public Works and is now a "Duly Authorized Employee". Two inspectors were hired during this reporting period. The pretreatment program is staffed by one Environmental Programs Coordinator and two Environmental Compliance Inspectors. No other significant changes occurred this reporting period.

There were many changes in business ownership and several new businesses this year. All of the new users were identified to be in the light industry category. Initially those businesses will be inspected annually and will not be subject to pretreatment sampling requirements, however; during

annual inspections, the environmental compliance inspector will be able to determine if operational changes warrant future pretreatment sampling requirements.

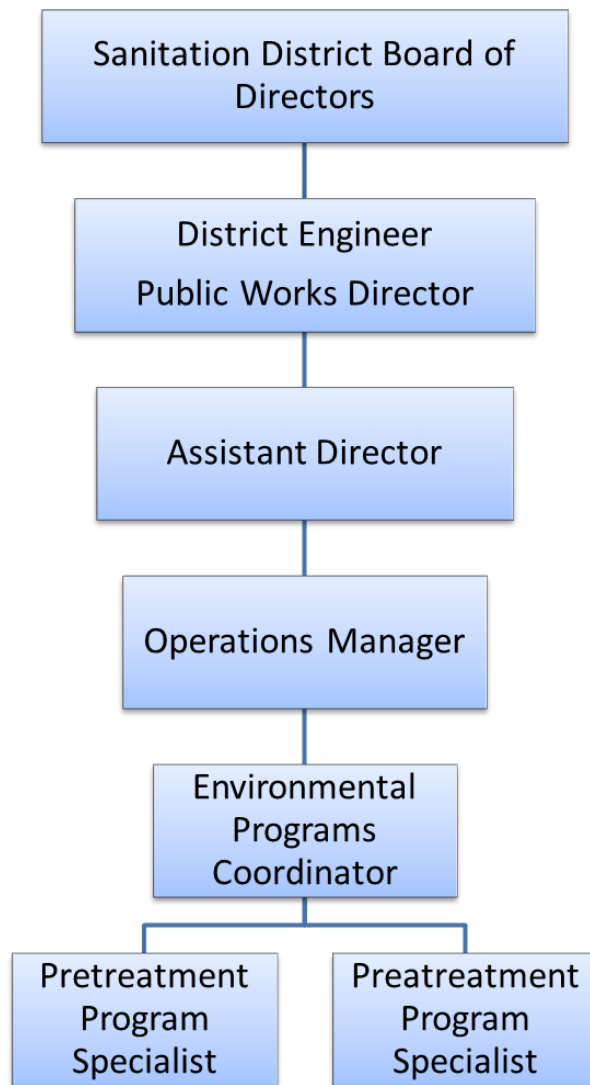
Seven businesses within the District are Significant Industrial Users (SIUs). All SIUs were inspected and sampled by the District. There was one SIU violation this year and no SIUs in significant non-compliance. The District continues efforts to reduce violations through communication, education, on-site inspections, and public outreach.

Pretreatment inspectors educate light industries operating in Santa Cruz County on process-specific pollution prevention and waste minimization opportunities. During inspections, Best Environmental Management Practices (BMPs) pamphlets and demonstrations for each particular industry are conveyed to business owners, managers, and employees. BMPs have been developed for vehicle service facilities, dentists, photo processors, restaurants, dry cleaners, printers, machine shops, surfboard manufacturers, paint contractors, mobile carwash businesses and medical facilities.

The District's wastewater laboratory successfully went through the recertification process required by the Environmental Laboratory Accreditation Program (ELAP).

In accordance with State Pretreatment Program requirements, the District continued to follow its Enforcement Response Plan to better effect compliance of all significant offenders of the District's discharge standards. Consequently, the District is prepared to bring repetitive non-compliant dischargers before the Board of Directors for the appropriate assessment of penalties.

## Wastewater Operations Source Control Organizational Chart



John Presleigh	District Engineer/Director of Public Works
Colt Esenwein	Assistant Director of Public Works
Beatriz Barranco	Sanitation Operations Manager
Amy Gross	Environmental Program Coordinator
Leslie Rios	Pretreatment Program Specialist
Marisol Goulett	Pretreatment Program Specialist

SANTA CRUZ COUNTY SANITATION DISTRICT

2016 FOURTH QUARTERLY REPORT SUMMARY

The Santa Cruz County Sanitation District performed routine inspections of the Significant Industrial Users currently operating within the District and performed additional routine inspections of light industries and the food service industry.

One SIU was in violation of pretreatment regulations this quarter. Bargetto Winery was in violation for exceeding pH limits. pH results were below the limit of 5.0 s.u.. The District issued Bargetto Winery a Letter of Violation on January 11, 2017 for the low pH discharge. Bargetto Winery is required to resample and submit results within 30 days. They are also required to implement further pretreatment measures to ensure compliance with local limits. A table for the fourth quarter results is provided as attachment A.

The District continued its public outreach and education program targeting residential sources of sewer stoppages caused by flushing non dispersible items. A television commercial was aired locally that conveys the importance of keeping fats, oils and grease out of the sewers. The commercial aired during the fourth quarter. It was also posted on the County's Public Works Facebook page.

## **Pretreatment Reporting Requirements NPDES Permit No. CA0048194**

### **Results of Sampling Analysis**

The District pumps its effluent from the D.A. Porath Pump Station at 2750 Lode Street, the last pump station prior to the force main, to the City of Santa Cruz Water Pollution Control Facility (SCCWPCF) at 110 California Street. The data provided by the City of Santa Cruz represents the combined flow from the City and outlying District areas and meets the requirements of the NPDES permit. Please refer to the annual report for the City of Santa Cruz for analytical results pertaining to the NPDES permit requirements.

### **Upset, Interference, or Pass-Through Incidents**

There were no upsets, instances of interference, or pass-through incidents caused by the District's industrial user discharges.

### **Baseline Monitoring Reports (BMRs)**

When a potential discharger of industrial wastes has been identified, an industrial wastewater application and survey is sent to that potential discharger. After the completed application has been returned and subsequently reviewed by the environmental programs coordinator, the decision is then made whether or not to require baseline testing and/or wastewater permitting. Existing permitted industries are semi-annually reviewed for baseline monitoring requirements. The need to submit a baseline monitoring report is determined for all non-categorical industrial dischargers at that time.

There were many changes in business ownership and a few new businesses this year. Initially the light industry facilities will be inspected annually and will not be subject to pretreatment sampling requirements, however; during annual inspections, the environmental compliance inspector will be able to determine if operational changes warrant future pretreatment sampling requirements. No additional SIUs or CSIUs were added to the District during this reporting period.

### **List of Industries, Standards that Apply, Noncategorical Industrial Users, and Compliance Status**

Industrial users listed in Table 1.1 are significant industrial users (SIUs) and businesses that require District special discharge permits. They have been identified either as an industry group, or as a single discharger having a potential impact on the wastewater treatment system. The District used its method of classification of industrial dischargers in accordance with the definitions and guidelines set forth in the Pretreatment Program Description, the Codified Federal Regulations, and the requirements of the NPDES permit. Table 1.2 details the District's local wastewater discharge limitations. Table 1.3 details any SIUs and permitted businesses that were added or deleted during this reporting period.

## **Industrial Inspections**

Table 2.1 summarizes all inspections of restaurants and light industrial users during this reporting period. Table 2.2 presents a summary of sampling and inspection results for all SIUs and permitted businesses, including their name, address, and compliance status. Definitions for the descriptions in Table 2.2 are also provided.

All SIU and permitted dischargers are scheduled for inspection at least once a year, although most years they are inspected two times. In addition, the SIU dischargers must submit self-monitoring reports (SMR) to the District semi-annually. District personnel sample the effluent of SIUs at least two times per year. For special discharge permits, the industrial user must submit an SMR to the District annually.

Several light industries within the District are also subject to inspection. A report compiled from the District's pretreatment program database is included as Attachment B. The report contains a list of all facilities subject to inspection and/or monitoring. Facilities are inspected annually. Included are the names and addresses of all SIUs.

In addition to routine inspections, the Environmental Compliance Unit also responds to and investigates various other events. These events include:

### **Odor Complaints**

- Hydrogen Sulfide – the ECU communicates with operations staff to identify and isolate the problem. Monitoring may include using a hydrogen sulfide field vapor unit to detect levels in manholes.
- Volatile Organic Compounds – the ECU uses a PID field unit to record specific levels and track the source. Wastewater samples are taken if necessary.



*The Environmental Compliance Unit using a PID to track strong solvent odors in a residential neighborhood.*



### Sanitary Sewer Overflows

- The ECU coordinates with the operations staff to collect information regarding the overflow.
- Collects samples when necessary.
- Investigate the source and take appropriate enforcement actions.
- Distribute public outreach information about preventing sewer spills and alert surrounding neighbors if there is a potential for people to be exposed.



*Door hangers that were delivered to residents of a mobile home park after a sewer spill occurred on their property.*

### Illicit discharges

- In compliance with state stormwater regulations, the ECU works with other County departments to respond to illicit discharges from both commercial and residential sources.



*Environmental Compliance Unit responding to an illicit discharge.*

### **Summary of Compliance and Enforcement Activities**

There was one SIU violation during this reporting year.

4<sup>th</sup> Quarter - Bargetto Winery was in violation during the 4th quarter for exceeding pH limits. They reported sample results with a pH lower than 5 s.u.. The District issued a letter of violation and required them to implement additional pretreatment measures. They are also required to report additional samples results within 30 days.

There were several minor light industry violations such as stormwater discharges and improper grease management in restaurants. Businesses with minor violations are issued a corrective action at the time of inspection or upon discovery. The environmental compliance inspector follows up within an assigned time-frame to ensure compliance is achieved. If the violation is not corrected, enforcement actions increase according to the District's Enforcement Response Plan. The District continues efforts to reduce these types of violations through communication, education, on-site inspections, and public outreach.

### **Pretreatment Program Changes**

There were some staff changes during this reporting period. John Swenson, formerly the District's Wastewater Operations Manager, has retired. He is no longer a "Duly Authorized Employee". The new Wastewater Operations Manager is Beatriz Barranco. Ms. Barranco is now a "Duly Authorized Employee". Colt Esenwein was hired as the Assistant Director of Public Works and is now a "Duly Authorized Employee". Two environmental compliance inspectors were hired this quarter. The pretreatment program staff includes one Environmental Programs Coordinator and two Environmental Compliance Inspectors. No other significant changes occurred this reporting period.

### **Summary of Pretreatment Program Budget**

Table 3.1 presents a summary of expenditures and inventory. The 2016-2017 Pretreatment Program budget was established at \$422,000.00. Additionally, funds were set aside for public outreach totaling \$50,000 and \$10,000 for the Green Business Program. Funds for the pretreatment laboratory work and supplies were established at \$22,000 for this reporting period. Revenue for the program is obtained from commercial and industrial user fees through the Sanitation District's Operating Fund.

*Santa Cruz County Sanitation District  
Pretreatment Program Annual Report 2016*

The 2016/2017 fee schedule is:

Single Family Residence	\$749.28 per year
Multiple Family Residence	\$626.04 per year
Condo/Townhome	\$626.04 per year
Low Water Use SFD	\$626.04 per year
Mobile Home	\$540.84 per year
Bakeries/Donut Shops	\$284.64 per year plus \$10.81/HCF
Restaurants/Catering	\$284.64 per year plus \$10.81/HCF
Food Processing	\$284.64 per year plus \$12.47/HCF
Funeral Parlor/Mortuary	\$284.64 per year plus \$12.47/HCF
Other Business (General)	\$284.64 per year plus \$7.39/HCF
All Schools (by water use)	\$284.64 per year plus \$7.09/HCF
Elementary and Middle Schools (by ADA)	\$284.64 per year plus \$18.94/ADA
High Schools (by ADA)	\$284.64 per year plus \$28.45/ADA
Community Colleges	\$284.64 per year plus \$25.04/FTES
State Parks	\$284.64 per year plus \$7.09/HCF
Dominican Hospital	\$284.64 per year plus \$7.78/HCF
Chaminade	\$284.64 per year plus \$10.59/HCF
Septic tanks/Vacant land	\$0.00

HCF = Hundred Cubic Feet ADA = Average Daily Attendance FTES = Full Time Equivalent Students

## **FOG Source Control Program**

The FOG Source Control Program is administered, along with the pretreatment program, by the Environmental Compliance Unit. The FOG Source Control Program has been in place since 1977. The District continues to implement a successful FOG program and maintains compliance with the District's Sanitary Sewer Management Plan (SSMP). The program elements include:

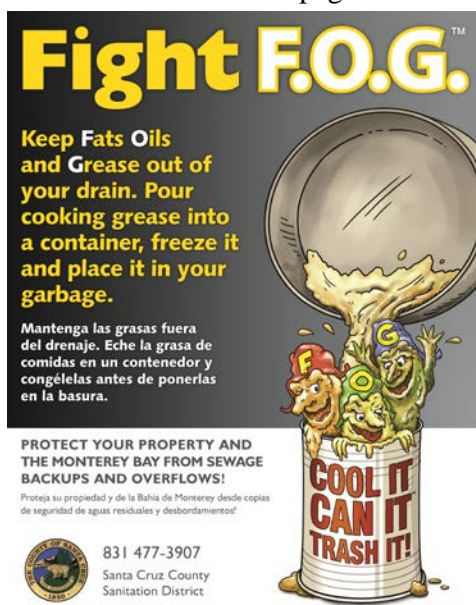
### **Residential FOG Control**

The residential FOG outreach program consists of advertising in local newspapers and mailers, as well as door hangers used in areas where known grease problems exist. The focus of the program is to educate residents and small businesses on the proper disposal of FOG and about the consequences of discharging grease and other harmful wastes into the sewer. Currently, the public outreach program contains several elements designed to help educate the public about FOG issues.

The District developed a bilingual pamphlet titled "Think Before You Flush" which is distributed in residential areas that are consistently having problems. This pamphlet details what is not appropriate to send down residential sinks, and why these issues are important. The "Think Before You Flush" pamphlet details explicitly what causes FOG problems, how to reduce FOG loads on the sewer lines, and why it is important to eliminate FOG from sewer lines. Additional public outreach material includes bilingual (Spanish and English) residential door hangers that are distributed to residential areas where sewer maintenance workers and repeat sewer spills indicate there are FOG problems. As with the "Think Before You Flush" pamphlet, the door hangers identify the problems associated with FOG and how these problems can be mitigated. The door hangers alert residents that the District is experiencing problems in the surrounding sewer lines due to grease.

Twice a year the District publishes an educational grease ad in several local papers to reduce residential sources of grease in our sanitary sewer. The ad is published before Thanksgiving and Christmas in order to reduce problems associated with grease from deep frying turkeys. The ad details ways in which people can reduce FOG in sewers and properly dispose of cooking grease.

The District partnered with the Monterey Regional Water Control Agency (MRWPCA) to develop a television commercial that conveys the importance of keeping fats, oils and grease out of the sewers. The commercial is aired annually during the holiday season. It is also posted regularly on the County's Public Works Facebook page.



*FOG advertisement published several times a year.*

### Commercial FOG Control

Significant effort has been focused on reducing Sanitary Sewer Overflows (SSOs) caused by FOG. There are 285 food service facilities that have FOG control devices in the Santa Cruz County Sanitation District. All commercial businesses are inspected annually or more if needed. The Santa Cruz County Sanitation District Code gives the District authority to prohibit discharges to the collection system. Title 7 Section 7.04.340 “Preliminary Treatment Facilities” details the requirements of the District code stating that all food service facilities must have a grease interceptor or trap. Grease interceptors and traps must meet sizing requirements and design criteria set forth by the District. All grease interceptors and traps must be maintained according to a pump schedule specified by the District Engineer. Invoices and manifests of pumping must be sent to the Environmental Compliance Unit as proof of maintenance. The maximum allowable pump schedule is every 90 days, but may be more frequent if necessary.

Special 30 day flush schedules are implemented by the sewer maintenance crew in areas that have higher grease loadings in the lines. The sewer line maintenance crew regularly meets with the ECU to discuss the problematic lines in the District. Based on that information, the ECU investigates the sources of the grease problems and performs repeat inspections. Food service facility inspections were conducted by the environmental compliance staff throughout the year. Increased efforts were aimed at reducing grease related SSOs and stormwater pollution caused by commercial establishments. In addition, District pretreatment inspectors review architectural plan sets for new restaurants to ensure implementation of Sewer Use Ordinance requirements for grease control devices.

Best Management Practices (BMPs) requirements for food service facilities include installing screens on all sink drains used for dishwashing, eliminating the use of grease interceptor/trap additives, eliminating the use of garbage disposal units, scraping all plates prior to the primary rinse, and proper storage of used deep-fryer oil. District staff developed a bilingual “Restaurant Wastewater” BMP pamphlet that details the appropriate ways to reduce FOG in sewer laterals and municipal sewer lines. It also details proper janitorial cleaning methods, the differences between interior and exterior grease interceptors and their maintenance requirements.

All inspections are unannounced. Inspectors use a database to query the facilities that are due for inspections. Some facilities will receive multiple inspections if corrective actions are required. In an effort to further the District’s sustainability goals, the ECU utilizes tablets in order to make inspections a paperless process. The tablets sync inspection data in real-time to the District’s database. The Environmental Compliance Inspectors completed approximately 300 FOG inspections during this reporting period.

## **Summary of Public Participation Activities**

No industrial users were published in the newspaper for significant noncompliance during this reporting period.

### **Pollution Prevention Public Outreach and Education**

Pretreatment staff continues to educate light industries operating in Santa Cruz County on process-specific pollution prevention and waste minimization opportunities. During audits, BMP pamphlets and demonstrations for each particular industry are provided to business owners, managers, and employees. BMPs have been created for vehicle service facilities, dentists, photo processors, restaurants, dry cleaners, printers, machine shops, surfboard manufacturers, paint contractors, mobile car washes and medical facilities.

Every year in April, the District participates in Earth Day Santa Cruz. The event provides an opportunity to educate children and the community about proper use of residential sewers. The event is attended by nearly 3,000 people.

The Sanitation District has been a key task force member and coordinator of the Monterey Bay Area Green Business Program since 2004. Goals of the green business program include promoting pollution prevention, waste minimization, and implementing best management practices that go above and beyond the regulatory standards. A task force consisting of multimedia regulators (stormwater, air, hazardous materials, as well as wastewater) and several non-profit organizations continues to meet quarterly to coordinate the program.

The District, in collaboration with other County and City agencies, was successful in implementing a pharmaceutical and sharps disposal program. The goal of the program was, and still is, to provide a convenient and permanent system to collect used sharps and unwanted pharmaceuticals in the County of Santa Cruz. The County established 30 convenient, widely publicized and well-known locations throughout the region for drop-off of sharps and pharmaceutical waste. The sites include pharmacies, a police station, a medical facility and all of the local household hazardous waste (HHW) facilities. The program, dubbed Sharp Solutions for Home Medicines, will continue to collect household medicines and sharps to reduce water pollution and public health risks. Through this program, large quantities of pharmaceutical waste and sharps have been diverted from improper waste disposal channels such as the sewer systems and storm drains.

The District pooled regional efforts and resources to develop the Monterey Bay Area Mobile Washers website featuring a training video and a place where businesses can pledge to follow the BMPs outlined in the training. This site instructs mobile cleaners on how to prevent pollution of waterways during cleaning activities and provides a list of mobile cleaners that have pledged to follow these practices. Informational pamphlets were sent to each mobile washing business in the region and urged them to visit the website, watch the video, and pledge to follow the BMPs. You can visit the website at the following link:

<http://mbaymobilecleaners.org/>

The District also utilizes Facebook and Twitter to provide outreach and education to the public. All of the pollution prevention public outreach information is available on the County Public Works Website.

<http://www.dpw.co.santa-cruz.ca.us/Home/Sanitation.aspx>

<http://www.dpw.co.santa-cruz.ca.us/Home/Sanitation/Business.aspx>

**Following is a table summarizing the District’s public education and outreach work status:**

Industry Type	Approx.# in District	BMPs	Inspection Checklist	Public Education Begun	Baseline Survey	Green Business Criteria
Food	285	Completed Revised	Updated	Yes- 2 Workshops held	Completed	Completed
Medical	101	Completed	Completed	1 Workshop held	None	Completed
Auto	90	Completed	Completed	2 Workshops held	Completed	Completed
Car Wash	5	Completed	Completed	Yes	None	Completed
Surface Cleaners	15-Work in District	Completed	N/A	Yes	None	None
Carpet Cleaning	TBD	Completed	N/A	None	None	Completed
Dental	70	Completed	Completed	2 Workshops held	Completed	Completed
Dry Cleaners	8	Completed	Completed	Yes	None	Completed
Landscapers	42	None	N/A	Yes	None	Completed
Painters	47	Completed	N/A	1 Workshop held	None	Completed
Photo	1	Completed	Completed	Yes	Completed	Completed
Printers	0	Completed	Completed	Yes	None	Completed
Plumbers	24	Completed	NA	2 Workshops held	NA	Completed
Machine Shops	10	Completed	Completed	Yes	None	None
Janitorial Companies	32	None	N/A	1 Workshop held	None	Completed
Salons	155	N/A	N/A	Yes	None	Completed

**Summary of Sludge Disposal Methods- N/A**

**Conclusion**

The District continues to monitor all existing and potential commercial and industrial users by questionnaire, inspection, surveillance monitoring, and compliance sampling when necessary. There were several light industry violations such as improper grease management in restaurants and stormwater discharges.

No SIUs were in significant non-compliance during this reporting period.

District personnel continue to educate light industries operating in Santa Cruz County on process-specific pollution prevention and waste minimization opportunities. During audits, BMP pamphlets and demonstrations for each particular industry are provided to business owners, managers, and employees.

The District partnered with the City of Santa Cruz and several non-profits on public outreach events and programs during 2016. This included Earth Day Santa Cruz, an informational commercial for television about reducing grease in sewers, BMP development, surface cleaners outreach and continued diverting pharmaceutical waste from improper disposal through the Sharp Solutions for Home Medicines take back program. The District is also a key member of the Monterey Bay Area Green Business Program.

Finally, the District's Environmental Programs Coordinator and the Environmental Compliance Inspectors keep apprised of the developments of the pretreatment industry in order to effectively administer state and federally mandated programs. Staff also utilizes several online industry groups to keep up to date with the most current information pertaining to pretreatment programs.



## DEFINITION LIST FOR TABLE 2.2

### **Inspections and Sampling:**

**Scheduled:** Scheduled inspections and monitoring are planned in advance with prior notice to the industry. The purpose of scheduled inspections and monitoring are: to collect information and obtain samples to evaluate industry compliance with wastewater discharge requirements; to identify changes in industrial processes that may affect the quality of the discharges and permit limitations; to maintain a cooperative, as well as regulatory, presence with the industrial community; to ensure that self-monitoring sample collection and preservation techniques are correct; and to verify self-monitoring report data.

**Unscheduled:** Unscheduled monitoring and inspections represent a random spot check to evaluate industry compliance. No advance notice is given. Unscheduled inspections are performed the same day as a discrete composite sample is collected and any operational changes or unusual incidents may be noted, if appropriate, in the field-sampling logbook. Unscheduled sampling may occur whenever an industrial user is suspected of having difficulties maintaining consistent compliance.

**Demand:** Demand monitoring and inspections are usually performed in response to a complaint or emergency situation. Most often these complaints are from POTW Laboratory or operations personnel who notice a change in the influent wastewater characteristics. Monitoring and inspections of this type are used to determine the nature, duration and hazard of the discharge, obtain samples to verify the source and constituents of the discharge, ascertain the necessary corrective actions needed to control or halt the discharge, initiate corrective actions, if needed, and document information for follow-up compliance or enforcement activities.

**Industrial User Self-Monitoring:** Industrial users are required, as part of their wastewater discharge permit, to perform self-monitoring of the wastewater discharged to the POTW. Frequency of self-monitoring is determined by considering the industry's past performance and compliance, the flow and constituents of the IU's discharge, the extent and number of problems in the POTW as a result of industrial discharges, new or additional pretreatment standards and requirements, and the seasonal production schedules at an industry.

**Compliance:** A minor violation is a violation by an industrial discharger which exceeds the specific limitations for wastewater discharges set forth in the sewer use code or the applicable categorical pretreatment standard, but does not cause or create hazardous conditions for line maintenance or POTW personnel; does not cause an upset of the treatment processes, an interference with treatment processes, or a pass-through of pollutants to the receiving waters; does not damage the sewer collection or treatment system; and does not cause the POTW to violate its NPDES permit.

**Enforcement:** Enforcement procedures include a written/verbal warning, written letter of violation, administrative order from the District Engineer, infraction citation with fines, civil action, and

criminal action. Chain of authority regarding enforcement procedures: The environmental compliance inspector samples industrial dischargers and investigates citizen complaints, and then reports the results of analyses or investigative findings to the Environmental Programs Coordinator. The Environmental Programs Coordinator then selects the appropriate enforcement in accordance with the District's Enforcement Response Plan. Actions brought before the District's Board are initiated by the Environmental Programs Coordinator. The Board and the District Engineer, as the Administrative Authority, make final decisions regarding fines and/or sewer service termination. The Santa Cruz County Sanitation District Code gives the District authority to implement enforcement response procedures. Title 7 Section 7.04.545 "Enforcement Response and Fines" details the enforcement procedures implemented by the District.

## PRETREATMENT ANNUAL REPORT

### PCS Data Entry Form

POTW Name: SANTA CRUZ COUNTY SANITATION DISTRICT

NPDES Permit #: CA0048194

Period Covered By This Report: 1-1-16 (PSSD)      12-31-16 (PSED)  
Start Date                      End Date

Number of Significant Industrial Users in SNC with  
Pretreatment Compliance Schedule:                      0 (SSNC)

Number of Notices of Violation and Administrative  
Orders Issued Against Significant Industrial Users:                      1 (FENF)

Number of Civil & Criminal Judicial Actions Against  
Significant Industrial Users:                      0 (JUDI)

Number of Significant Industrial Users with  
Significant Violations Published:                      0 (SVPU)

Number of Industrial Users From Which Penalties Have  
Been Collected:                      0 (IUPN)

**TABLE 1.1  
 INDUSTRIAL USER REPORT**

Industrial User Name & Address	Applicable Categorical Standard	Subject to Local Stnds/ Noncategorical	Local Discharge More Stringent than Fed.	Notified BMR	BMR Rec'd	Compliance Status (below)		Quarter	Remarks
						Federal	Local		
CABRILLO COLLEGE 6500 SOQUEL DR APTOS, CA	NONE	YES	N/A	NO	NO		A1 A2 A1 A2	1 2 3 4	
SANTA CRUZ CITY TREATMENT PLANT 3701 ROLAND AVE SANTA CRUZ, CA	NONE	YES	N/A	NO	NO		A1 A2 A1 A2	1 2 3 4	
MILLS PENNINSULA HEALTH SERVICES 2025 SOQUEL DR SANTA CRUZ, CA	NONE	YES	N/A	NO	NO		A1 A2 A1 A2	1 2 3 4	
DOMINICAN HOSPITAL 1555 SOQUEL DR SANTA CRUZ, CA	NONE	YES	N/A	NO	NO		A1 A2 A1 A2	1 2 3 4	
				<u>TOTAL</u> 0	<u>TOTAL</u> 0				

**Compliance Status Key**

- A) Consistently achieving compliance
- B) Inconsistently achieving compliance
- C) Significantly violating compliance
- D) Compliance status unknown
- \* On a compliance schedule to achieve compliance

**Compliance Determination Key**

- 1) POTW compliance sampling only
- 2) IU Self-Monitoring Only
- 3) Both 1 & 2
- 4) Other (see Footnote)
- N/A: Not applicable

Remarks:

**TABLE 1.1  
 INDUSTRIAL USER REPORT**

Industrial User Name & Address	Applicable Categorical Standard	Subject to Local Noncategorical	Local Discharge More Stringent than Fed.	Notified BMR	BMR Rec'd	Compliance Status below)		Quarter	Remarks
						Federal	Local		
BARGETTO WINERY 3535 N. MAIN ST SOQUEL, CA	NONE	YES	N/A	NO	NO		A1 A2 A1 B2	1 2 3 4	
SOQUEL CREEK WATER PO BOX 158 SOQUEL, CA	NONE	YES	N/A	NO	NO		A1 A2 A1 A2	1 2 3 4	
CALIFORNIA RADIOGRA 3335 SOQUEL DR SOQUEL, CA	NONE	YES	N/A	YES	YES		A1 A2 A1 A2	1 2 3 4	
				<u>TOTAL</u> 1	<u>TOTAL</u> 1				

**Compliance Status Key**

- A) Consistently achieving compliance
- B) Inconsistently achieving compliance
- C) Significantly violating compliance
- D) Compliance status unknown
- \*On compliance schedule to achieve compliance

**Compliance Determination Key**

- 1) POTW compliance sampling only
- 2) IU self monitoring only
- 3) Both 1 & 2
- 4) Other
- N/A: Not applicable

Remarks:

**TABLE 1.2**  
**SANTA CRUZ COUNTY SANITATION DISTRICT**  
**WASTEWATER DISCHARGE LIMITATIONS**

<u>Pollutant</u>	<u>Concentration, (mg/L)</u>
Arsenic	0.21
Cadmium	1.57
Total Chromium	35.65
Chromium Hexavalent	5.26
Copper	2.17
Cyanide	0.08
Lead	6.04
Mercury	0.32
Nickel	1.15
Silver	0.70
Sulfide (dissolved)	0.2 (Monthly average, 1.0 Maximum)
Suspended Solids	3,000
Zinc	25.23
pH, units	5.0 to 10

Temperature Not over 104°F (except where higher temperatures are permitted by law) except in no case shall the temperature of the wastewater influent at the treatment plant exceed 104°F.

Oil or Grease of animal or vegetable Origin	300
Total petroleum hydrocarbons (TPH)	50
Methyl-t-butyl Ether (MTBE)	1.0
* Total toxic organics (TTO)	1.0
**Phenolics, Total	150
***Phenolics, chlorinated	0.6
Chlordane	$1.48 \times 10^{-5}$
DDT, o,p'	0.011
dieldrin	$9.40 \times 10^{-5}$
endosulfan I	0.006
endrin	0.002
heptachlor	0.00014
heptachlor epoxide	$1.39 \times 10^{-5}$
hexachlorobenzene	23.50
Naphthalene	2350
Phenanthrene/Anthracene, C1 -	2349.99
Anthracene	2422.68
Fluoranthene	123.38
8 - PCB	0.000138859
2,3,7,8-TCDD	$2.53 \times 10^{-9}$

\*TTO is defined as the sum of all individual compounds listed in the Code of Federal Regulations (CFR) at 40 CFR 433.11e with quantifiable concentrations greater than 0.01 mg/L when measured using test methods approved under 40 CFR 136 or other methods approved for NPDES monitoring, and other toxic organic compounds as determined by the Director.

\*\*Phenols, total, by EPA Method 420.1.

\*\*\*Phenols, chlorinated, is defined as the sum of 2-chlorophenol, 2,4-dichlorophenol, pentachlorophenol, 2,4,6-trichlorophenol and 4-chloro-3-methylphenol (p-choloro-m-cresol).

**TABLE 1.3 A**

**INDUSTRIES REMOVED FROM MONITORING BY THE DISTRICT**

<u>Company Name</u>	<u>Company Address</u>	<u>Company Contact</u>	<u>Telephone</u>	<u>Permit Type</u>
None				

**Table 1.3 B**

**INDUSTRIES ADDED TO MONITORING SCHEDULE BY THE DISTRICT**

<u>Company Name</u>	<u>Company Address</u>	<u>Company Contact</u>	<u>Telephone</u>	<u>Permit Type</u>
None				



**TABLE 2.1**  
**ANNUAL INSPECTIONS COMPLETED**

<b>Industries</b>	<b>Inspections Completed 2014</b>	<b>Inspections Completed 2015</b>	<b>Inspections Completed 2016</b>
Food Service Establishments	263	184	291
Industrial Light (including vehicles service, dry cleaners, machine shops, car washes)	99	21	152
Other Miscellaneous (including plan reviews, new installs)	31	35	25
<b>Total</b>	<b>393</b>	<b>240</b>	<b>468</b>

NOTE: Inspections consisted of full facility inspection, partial facility inspection (in order to alleviate a specific problem on a certain date), plan reviews and new installs, and re-inspections. Only full facility inspections are recorded in the District's Pretreatment Program database.

**TABLE 2.2  
 MONITORING AND COMPLIANCE / ENFORCEMENT STATUS REPORT**

Industrial Users Name & Address	QTR	District Planned Sample	District Actual Sample	District Planned Inspect	District Actual Inspect	IU Sample	Spill Emerg Inspect/ Sample	Conclusions/ Results	Compliance/Enforcement					
									QTR	LOV	ADMIN ORDER	CIV ACT	CRIM ACT	FINE
BARGETTO WINERY 3535 N. MAIN ST. SOQUEL, CA	1	1	1	0	0	0	0/0	Inconsistently compliance.	1					
	2	0	0	0	0	1	0/0		2					
	3	1	1	1	1	0	0/0		3					
	4	0	0	0	0	1	0/0		4	B				
	<b>TOTAL</b>	<b>2</b>	<b>2</b>	<b>1</b>	<b>1</b>	<b>2</b>	<b>0/0</b>							
CABRILLO COLLEGE 6500 SOQUEL DR APTOS, CA	1	1	1	0	0	0	0/0	Consistently compliance.	1					
	2	0	0	0	0	1	0/0		2					
	3	1	1	0	0	0	0/0		3					
	4	0	0	1	1	1	0/0		4					
	<b>TOTAL</b>	<b>2</b>	<b>2</b>	<b>1</b>	<b>1</b>	<b>2</b>	<b>0/0</b>							
MILLS PENINSULA SERVICES 2025 SOQUEL DR. SANTA CRUZ, CA	1	1	1	0	0	0	0/0	Consistently compliance.	1					
	2	0	0	0	0	1	0/0		2					
	3	1	1	0	0	0	0/0		3					
	4	0	0	1	1	1	0/0		4					
	<b>TOTAL</b>	<b>2</b>	<b>2</b>	<b>1</b>	<b>1</b>	<b>2</b>	<b>0/0</b>							

Notes & Remarks:

- (L) Regarding Violation of Local Std.
- (F) Regarding Violation of Federal Std.
- (B) Regarding Violation of Both
- (SNC) Regarding Significant Non-compliance
- (P) Regarding Violation of Permit Conditions

**TABLE 2.2**

**MONITORING AND COMPLIANCE / ENFORCEMENT STATUS REPORT**

Industrial Users Name & Address	QTR	District Planne Sample	District Actual Sample	District Planned Inspect	District Actual Inspect	IU Sample	Spill Emerg Inspect/ Sample	Conclusions/ Results	Compliance/Enforcement					
									QTR	LOV	ADMIN ORDER	CIV ACT	CRIM ACT	FINE
SANTA CRUZ WATER TREATMENT PLANT 3701 ROLAND AVE SANTA CRUZ, CA	1	1	1	0	0	0	0/0	Consistently achieving compliance	1					
	2	0	0	0	0	1	0/0		2					
	3	1	1	1	1	0	0/0		3					
	4	0	0	0	0	1	0/0		4					
	<b>TOTAL</b>	<b>2</b>	<b>2</b>	<b>1</b>	<b>1</b>	<b>2</b>	<b>0/0</b>							
DOMINICAN HOSPITAL 1555 SOQUEL DR. SANTA CRUZ, CA	1	1	1	0	0	0	0/0	Consistently achieving compliance	1					
	2	0	0	1	1	1	0/0		2					
	3	1	1	0	0	0	0/0		3					
	4	0	0	1	1	1	0/0		4					
	<b>TOTAL</b>	<b>2</b>	<b>2</b>	<b>1</b>	<b>1</b>	<b>2</b>	<b>0/0</b>							
SOQUEL CREEK WATER TREATME PLANTS PO BOX 158 SOQUEL, CA	1	1	1	0	0	0	0/0	Consistently achieving compliance	1					
	2	0	0	0	0	1	0/0		2					
	3	1	1	1	1	0	0/0		3					
	4	0	0	0	0	1	0/0		4					
CALIFORNIA RADIOGRAPHICS 3335 SOQUEL DR SOQUEL, CA	1	0	0	1	1	0	0/0	Consistently achieving compliance	1					
	2	1	1	0	0	0	0/0		2					
	3	0	0	0	0	1	0/0		3					
	4	0	0	0	0	0	0/0		4					
	<b>TOTAL</b>	<b>1</b>	<b>1</b>	<b>1</b>	<b>1</b>	<b>1</b>	<b>0/0</b>							

**TABLE 2.3 SUMMARY OF PRETREATMENT BUDGET**

	<b>Source Control</b>	<b>Public Outreach</b>	<b>Source Control Lab Work</b>	<b>Green Business</b>
<b>Budget Year 2016-17</b>	422,000	50,000	22,000	10,000
<b>Budget Year 2015-16</b>	400,000	50,000	25,000	10,000

**TABLE 3.1 SUMMARY OF PRETREATMENT EQUIPMENT PURCHASES**

This Reporting Year

<u>Equipment</u>	<u>Cost</u>
Miscellaneous sampling and auditing tools	\$5,000
Lab Analysis and supplies	\$8,300
<b>TOTAL</b>	<b>\$13,300</b>

Current Equipment

(2) Isco Portable samplers	Tripod & line X Laptop Computer	Computer Software
(2) Two-way mobile radio	Portable Analyzer	Wastewater Gas Analyzer
Sample bottles	Educational Videos	Various Subscription Services
pH Meter	(3) Cell Phones	2 Samplers and Related Equipment
Harness and safety vests	Sludge Judge	Misc. Sampling/auditing tools Samsu
Hard hats	Refrigerator	O2 Sensor
Safety goggles	DI Water System	2 - 2 drawer files
Steel toed shoes	Manhole Fall Guard	VOC Meter
Traffic cones	Various hand tools Mini Refrigerator	Membrane Filtration Manifold
First Aid Kit	3 - IBM-Compatible Computers	H2S Meter
Swing Sampler	Dishwasher and Racks	Misc. lab equipment
Water Bath	Incubators	(3) Vehicles
DO Meter/Probe		
Reference Thermometers		

# **ATTACHMENT A**

## **Fourth Quarter Monitoring Results**

**4th QUARTER STATUS REPORT 2016**

<b>Industrial Users Name and Address</b>	<b>Compliance Status</b>	<b>Previous Quarters Not in Compliance</b>	<b>Parameter</b>	<b>Reported Level</b>	<b>Limit Violated</b>	<b>Flow</b>	<b>Corrective/ Enforcement Actions</b>
Bargetto Winery	C2	None	pH	<5.0	Local Limit: 5.0-10	A	LOV: Re-sample

Comment Section

Flow Key

- A. 0-10,000 gpd
- B. 10,000-30,000 gpd
- C. 30,000-50,000 gpd
- D. 50,000-100,000 gpd
- E. >100,000 gpd

Compliance Status Key

- A. In compliance with Baseline Monitoring Report requirements
- B. Consistently achieving compliance
- C. Inconsistently achieving compliance
- D. Significantly violated applicable pretreatment requirements as defined by 40 CFR 403.8(f) (2) (vii)
- E. On a compliance schedule to achieve compliance
- F. Not achieving compliance and not on a compliance schedule
- G. The District does not know the industrial user's compliance status

Compliance Determination

- 1.) POTW sampling
- 2.) IU self-monitoring
- 3.) Combination of 1 and 2
- 4.) Other (explain)

# **ATTACHMENT B**

## **Restaurant and Light Industry Inspections**

# Annual Facilities by Classification Summary Report

1/18/2017

2:45:17PM

2016

Food Service Facility Inspections

## Classification

Facility Name:	Address:	City:	Contact Name:	Last Inspection:	Inspections:
<b>Coffee Shop</b>					
CAPITOLA COFFEE	165 SAN JOSE AVE	CAPITOLA	MICHAEL FISHER	10/4/2016	1
JAZZLAND ESPRESSO & COFFEE	2911 CHANTICLEER AVE	Santa Cruz	SHELLY OR DAWN	2/11/2016	1
STARBUCKS EAST CLIFF	21620 E CLIFF DR	Santa Cruz	BETH MANAGER	7/29/2016	3
TARGET STARBUCKS	1825 41ST AVE	CAPITOLA	PETER	2/17/2016	1
CAT & CLOUD COFFEE	3600 PORTOLA DR	SANTA CRUZ	JARED TRUBY	7/26/2016	1
VERVE COFFEE ROASTERS	816 41ST AVE	Santa Cruz	Ryan Odonovan	3/25/2016	1
DRIP COFFEE (CABRILLO COLLEGE)	6500 SOQUEL DR	APTOS	KATHERINE BAILEY	8/17/2016	1
BOUCHEES	110 STOCKTON AVE	CAPITOLA	HELMUT JOHN FRITZ	3/1/2016	1

**Business Type Summary: Coffee Shop**

**Businesses Inspected: 8**  
**Total Inspections: 10**

## Hospitals

DOMINICAN HOSPITAL	1555 SOQUEL DR	Santa Cruz	Kevin Keith	1/20/2016	1
SUTTER MATERNITY	2900 CHANTICLEER AVE	Santa Cruz	BRYAN CRISPELL	9/8/2016	2

**Business Type Summary: Hospitals**

**Businesses Inspected: 2**  
**Total Inspections: 3**

## Miscellaneous Food

HEARTS AND HANDS REHAB CENTER	2990 SOQUEL AVE	SANTA CRUZ	RICHARD CAMP	9/6/2016	1
MAPLE HOUSE	2000 BROMMER ST	SANTA CRUZ	RONALD LISING	9/13/2016	1
OHLSEN FOODS	2880 RESEARCH PARK DR	SOQUEL	CHRIS OLSEN	8/25/2016	1
KINDRED NURSING AND REHABILITATION	1115 CAPITOLA RD	SANTA CRUZ	MARIA ROMANDIA	11/3/2016	1
LIVE OAK KITCHEN	1777 CAPITOLA RD	SANTA CRUZ	REYNA SALAS	11/3/2016	1
FRIEND IN CHEESES JAM	2901 RESEARCH PARK DR B	Soquel	Tabitha Stroup	8/25/2016	1
NEW BOHEMIA BREWING COMPANY	1030 41ST AVE	SANTA CRUZ	CASSIDY	6/7/2016	1
FREEDOM MEAT MARKET	160 HI GRADE LN	FREEDOM	Debbie Walker	1/13/2016	1
PACIFIC COAST MANOR/ROSSCAMP	1935 WHARF RD	CAPITOLA	MARISE GOETZL COLIN LOVE	8/25/2016	1
SOQUEL LEISURE VILLA	4104 FAIRWAY DR	SOQUEL	HAYDEE SATO	9/6/2016	1
7TH AVENUE CENTER	1171 7TH AVE	Santa Cruz	SANDY Gilardon GILARDONI	8/25/2016	1
AEGIS ASSISTED LIVING	125 HEATHER TER	APTOS	JOSE GODINEZ	8/23/2016	1
EL DORADO CENTER	914 EL DORADO AVE	SANTA CRUZ	DAVID CAMPBELL LEON	8/25/2016	1
PARADISE VILLA	2177 17TH AVE	SANTA CRUZ	LINDA HALL	8/25/2016	1
DRIFTWOOD CONV HOSPITAL	675 24TH AVE	SANTA CRUZ	RUTH CUZICK	8/25/2016	1
CABRILLO COLLEGE - FOOD SERVICE	6500 SOQUEL DR	APTOS	JOE NUGENT	9/1/2016	1
CAPITOLA MANOR	1098 38TH AVE	SANTA CRUZ	VICKI HEADY	8/25/2016	1
MARIANNE'S ICE CREAM	218 STATE PARK DR	APTOS	CHARLIE WILCOX	5/23/2016	1



# Annual Facilities by Classification Summary Report

1/18/2017

2:45:17PM

2016

Food Service Facility Inspections

## Classification

Facility Name:	Address:	City:	Contact Name:	Last Inspection:	Inspections:
<b>Miscellaneous Food</b>					
SOQUEL QUALITY MEAT	4623 SOQUEL DR	Soquel	HECTOR PONCE	8/25/2016	1
CHATEAU GUEST HOME	1340 17TH AVE	SANTA CRUZ	LORNA BELTRAN BELTRAN	8/25/2016	1
GOLDEN AGE CONVALESCENT H	523 BURLINGAME AVE	CAPITOLA	BETH TAYLOR	9/13/2016	1
JUICY SWEET	7518 SOQUEL DR	APTOS	JOHN LINDBERG	10/17/2016	2
VALLEY HAVEN	2268 CHANTICLEER AVE	SANTA CRUZ	MINERVA VELASCO	8/25/2016	1
CINELUX THEATRES	1475 41ST AVE	CAPITOLA	TOM COLE	6/9/2016	1
<b>Business Type Summary: Miscellaneous Food</b>				<b>Businesses Inspected:</b>	24
				<b>Total Inspections:</b>	25

## Restaurant

STARBUCKS	1955 41ST AVE	Capitola	Sally Rutherford	4/1/2016	1
COFFETOPIA 2	1443 CAPITOLA RD	Santa Cruz	DAVE LARKIN	2/10/2016	1
WINDMILL CAFE	21231 E CLIFF DR	Santa Cruz	Mary Apra Mary Apra	8/22/2016	1
APTOS COFFE ROASTING CO	19 RANCHO DEL MAR	Aptos	BECKY ACOSTA	1/26/2016	1
GLORIA'S PANTRY	2551 S RODEO GULCH RD	Soquel	LOU CLINTON	2/10/2016	1
KITCHEN SPACE INC.	2431 CHANTICLEER AVE	SANTA CRUZ	KIM DUNN GREG DUNN	2/11/2016	1
DHARMA'S	4250 CAPITOLA RD	Capitola	YOGI BERNARD SHAPIRO	5/6/2016	1
APTOS NATURAL FOODS	7506 SOQUEL DR	Aptos	Aria or Dario Dickinson	8/24/2016	1
CANTINE WINEPUB	8050 SOQUEL DR	APTOS		8/11/2016	1
RUYI DIM SUM	1200 41ST AVE	CAPITOLA	KAREN HUANG	4/26/2016	1
NAKA SUSHI	1200 41ST AVE	Capitola	TYRONE MCCONNIE	10/7/2016	1
SORABOL	1855 41ST AVE	CAPITOLA		3/15/2016	1
HARVEST MOON MRKT	518 GREEN VALLEY RD	Freedom	LAZARO OLIVARES	1/13/2016	1
JAMBA JUICE	3555 CLARES ST	Capitola	MICHEAL AMATO	4/8/2016	1
QUIK STOP	5505 SOQUEL DR	Soquel	Mehrdad Amariou	2/18/2016	1
MID COUNTY SENIOR CENTER	829 BAY AVE	Capitola	LISA SOTERO JIM BOWMAN	9/6/2016	1
KENTUCKY FRIED CHICKEN no.7	2120 41ST AVE	Capitola	SUSANA PEREZ	3/30/2016	1
AU MIDI	7960 SOQUEL DR	Aptos	MURIEL LOUBIERE	3/1/2016	1
GUANG ZHO	3150 PORTOLA DR	Santa Cruz	Sophia	2/10/2016	1
HEATHERS PATISSERIE	7486 SOQUEL DR	Aptos	HEATHER LINER	8/24/2016	1
EASTSIDE EATERY	800 41ST AVE	Santa Cruz	Pac Cpn Management 722-7609	10/17/2016	2
MELINDAS GLUTEN FREE BAKEF	1420 41ST AVE	Capitola	& Melinda Harrower	2/17/2016	1
MAIN STREET BAGELS	1475 41ST AVE	Capitola	Rosan Tong	1/14/2016	1
BETTY BURGER	1000 41ST AVE	Santa Cruz	Juan Valledor	5/11/2016	1
MEL'S MARKET	2425 SOQUEL DR	Santa Cruz	Melissa Brownell	2/11/2016	1
TACOS MORENO	1601 41ST AVE	Capitola	Juan Moreno	5/24/2016	1

# Annual Facilities by Classification Summary Report

1/18/2017

2:45:17PM

2016

Food Service Facility Inspections

## Classification

Facility Name:	Address:	City:	Contact Name:	Last Inspection:	Inspections:
<b>Restaurant</b>					
VILLAGE KITCHEN	2800 S RODEO GULCH RD	Soquel	JAMIE SMITH	6/27/2016	1
YOGURLAND	1955 41ST AVE	Capitola	Brian Dueck; Dylan Leas	5/26/2016	1
CHIPOTLE	1955 41ST AVE	CAPITOLA		3/17/2016	1
PENNY ICE-CREAMERY	800 41ST AVE	Capitola	ZACH	3/25/2016	1
DISCRETION BREWERY	2703 41ST AVE A	SOQUEL	Kathleen Jason (Kitchen)	6/15/2016	1
AMAZON JUICE	1066 41ST AVE	SANTA CRUZ	FERNANDO	6/14/2016	1
SUBWAY 3	1855 41ST AVE	CAPITOLA		3/15/2016	1
HARBOR CAFE	535 7TH AVE	Santa Cruz	DAN	8/23/2016	1
LITTLE CAESAR'S PIZZA	1701 PORTOLA DR	SANTA CRUZ	Barbara Williams	5/24/2016	1
SURF CITY SANDWICH	4101 SOQUEL DR B-1	Soquel	Elaine and Paul Figliomeni	9/6/2016	1
ZAMEEN	851 41ST AVE	SANTA CRUZ		8/11/2016	1
WETZELS PRETZELS	1855 41ST AVE	CAPITOLA		3/15/2016	1
AJ'S FUEL MARKET	5955 SOQUEL DR	SOQUEL	AJ JAVED	11/3/2016	1
TUTTO FRESCO	21400 E. Cliff Drive	Santa Cruz	GIOVANNI SPANU	8/17/2016	2
TOGOS	1955 41ST AVE	CAPITOLA	KURT WEIDNER	3/17/2016	1
BURGER	7941 SOQUEL DR	APTOS		2/24/2016	1
CAPITOLA DINER	1900 41ST AVE	CAPITOLA	PEDRO SALAZAR	3/30/2016	1
SEASCAPE GOLF COURSE	610 CLUB HOUSE DR	APTOS	Gary	5/10/2016	1
CAMELLIA TEA ROOM	911 CAPITOLA AVE	Capitola		6/6/2016	1
DAVENPORT ROADHOUSE	1 DAVENPORT AVE	Davenport	Ruben	2/12/2016	1
BITTERSWEET BISTRO	783 RIO DEL MAR BLVD	Aptos	THOMAS VINOLUS	1/28/2016	1
DOMINICAN OAKS	3400 PAUL SWEET RD	Santa Cruz	ERIC BOTKIN	6/20/2016	1
PARADISE BEACH GRILLE	215 ESPLANADE	CAPITOLA	Marilyn Girard STEVE HANECAI	6/7/2016	1
THE SAND BAR	211 ESPLANADE	Capitola	LINDA BENNETT	4/7/2016	1
UNCIE RO'S	2901 RESEARCH PARK DR	Soquel	ERIC SOUDER	6/27/2016	1
CARPO'S	2400 PORTER ST	SOQUEL	TODD, INDY	4/13/2016	1
CARRIED AWAY	7564 SOQUEL DR	Aptos	Tran or Thomas	8/18/2016	1
LAGO DI COMO	1490 E CLIFF DR	Santa Cruz	Mary Ellen Spanu and GIOVANNI	1/25/2016	1
SEASCAPE RESORT&CONFEREN	1 SEASCAPE BLVD	Aptos	JOHN PABST	3/30/2016	1
PALAPA'S RESTAURANT & CANTI	21 SEASCAPE VILLAGE	Aptos	SUE HARRINGTON	3/30/2016	1
SHADOWBROOK	1750 WHARF RD	Capitola	JOHN SKINNER TED BURKE	9/13/2016	1
IHOP	1549 41ST AVE	Capitola	Lacy Faber	4/8/2016	1
GG RESTAURANT	8041 SOQUEL DR	APTOS	CRISTINA LOCKE	8/23/2016	4
PAPA MURPHY'S	1420 41ST AVE	Capitola	Kim & David Smith	5/25/2016	1
ZELDA'S	203 ESPLANADE	Capitola	BETTY	4/7/2016	1
BASKIN ROBBINS	1601 41ST AVE	Capitola	RAMA and Ali PATEL	5/25/2016	1

# Annual Facilities by Classification Summary Report

1/18/2017

2:45:17PM

2016

Food Service Facility Inspections

## Classification

Facility Name:	Address:	City:	Contact Name:	Last Inspection:	Inspections:
<b>Restaurant</b>					
SEASIDE SIAM	207 ESPLANADE	Capitola	Pinky	4/7/2016	2
BOULDER CREEK COUNTRY CLL	16901 BIG BASIN HWY	BOULDER CREEK	LORI DEFRATUS	6/22/2016	1
BRITTANIA ARMS	110 MONTEREY AVE	Capitola	Andy	6/1/2016	1
CAFE SPARROW	8042 SOQUEL DR	Aptos	BOB MONTAGUE	1/26/2016	1
VILLAGE GRILL AND CREAMERY	104 STOCKTON AVE	Capitola	CHARLIE WILCOX	6/16/2016	1
FAST EDDYS	4300 CAPITOLA RD	Capitola	TODD CADY	2/10/2016	1
ARMIDA WINERY	103 STOCKTON AVE	Capitola	PETER HUBBACK	6/16/2016	1
THE COFFEE HOUSE	1700 COMMERCIAL WAY	Santa Cruz	Bill	6/29/2016	1
DAVENPORT CAFE	500 HWY 1	Davenport	ZYYAD AYAD	8/11/2016	2
CHILL OUT CAFE	860 41ST AVE	Santa Cruz	JOHN PICKART	2/9/2016	1
EL CHIPOTLE	4724 SOQUEL DR	Soquel	IRMA , Pedro HERNANDEZ	2/11/2016	1
SESNON HOUSE	6500 SOQUEL DR	Aptos	CHRISSY HINKS	6/15/2016	1
CHILI'S RESTAURANT	1855 41ST AVE	Capitola	David Simmons	5/4/2016	1
LA CABANA II	3070 PORTER ST	Soquel	BENJAMIN LANDEROS	5/11/2016	1
STARBUCKS AT THE MALL	1855 41ST AVE	Capitola	ELISA	2/17/2016	1
ZIZZO'S COFFEE	3555 CLARES ST	Capitola	Aaron Anderson	4/8/2016	1
PEET'S COFFEE	819 BAY AVE	Capitola	VANESSA MANCHA	6/2/2016	2
STARBUCKS-APTOS	105 POST OFFICE DR B	Aptos	Yvonne Stewart	12/21/2016	2
PEOPLE'S COFFEE	1200 17TH AVE	Santa Cruz	CURTIS PIERATT	3/25/2016	1
STARBUCK'S 41ST & SOQUEL DR	2740 41ST AVE	Soquel	SARAH WOODER	2/17/2016	1
SEA SIDE COFFEE	105 STOCKTON AVE	Capitola	STEVEN SKY	6/16/2016	1
CAPITOLA DELI AND CAFE	201 MONTEREY AVE	Capitola	NARMI	3/25/2016	1
AVENUE CAFE	427 CAPITOLA AVE	Capitola	Salvador Diaz	6/1/2016	1
BEST IN DOGS	2600 41ST AVE	Soquel	CHRISTINA CARPENTER	6/2/2016	1
APTOS GRANGE	2555 MAR VISTA CT	Aptos	RANDY TURNQUIST	6/23/2016	1
MICHAEL'S ON MAIN	2591 MAIN ST	Soquel	MICHAEL CLARK	6/27/2016	1
ROCK OF PETRA	201 ESPLANADE	Capitola	AL	8/2/2016	4
BELLA ROMA RESTAURANT	316 CAPITOLA AVE	Capitola	GAETANO BALSAMO	10/12/2016	1
STAR BENE	1245 E CLIFF DR	Santa Cruz	SANDRA COSTANZA	6/3/2016	1
SEVERINOS RESTAURANT	7500 OLD DOMINION CT	APTOS	GUSTAVO HEREDIA	6/29/2016	1
EI JARDIN	655 CAPITOLA RD	Santa Cruz	George Delgado	6/3/2016	1
HOLE IN THE WALL CAFÉ	257 CENTER AVE	Aptos	MARTIN VELASQUEZ	8/18/2016	1
LITTLE OWL ITALIAN KITCHEN	8017 SOQUEL DR	Aptos	MATHEW WALTHERD	8/17/2016	2
J.J.'S SALOON (SOCIAL GRUB)	4714 SOQUEL DR	Soquel	JUDY VIERRA JEFF	6/27/2016	1
THE POINT CHOP HOUSE	3326 PORTOLA DR	SANTA CRUZ	Steve Parmelee	6/23/2016	1
COLE'S BAR-B-Q	2590 PORTOLA DR	Santa Cruz	TIM HIGBY	8/9/2016	1

# Annual Facilities by Classification Summary Report

1/18/2017

2:45:17PM

2016

Food Service Facility Inspections

## Classification

Facility Name:	Address:	City:	Contact Name:	Last Inspection:	Inspections:
<b>Restaurant</b>					
PIZZA MY HEART 41st	2180 41ST AVE	CAPITOLA	Brian Leopold	5/24/2016	1
CAFÉ CRUZ	2621 41ST AVE	SOQUEL	STEVE WILSON	5/24/2016	1
APTOS ST BBQ	8059 APTOS ST	Aptos	Eric Ingram	10/17/2016	3
STOCKTON BRIDGE GRILLE	231 ESPLANADE	Capitola	LEE WALTERS	8/16/2016	1
CAFE RIO	131 ESPLANADE	Aptos	JEANIE HARRISON Jeanie Harr	8/10/2016	1
FISH LADY MARKET	2510 MAIN ST	Soquel	SHARON HADLEY	6/27/2016	1
TAKARA	3775 CAPITOLA RD	Capitola	YUKI CHAN	3/17/2016	1
SUDA	3910 PORTOLA DR	Santa Cruz	DANIEL	5/10/2016	1
KONG'S MARKET	400 26TH AVE	Santa Cruz	KYUNG AHN	8/22/2016	1
HOTDOG ON A STICK	1855 41ST AVE	CAPITOLA		3/15/2016	1
POINT MARKET AND CAFE	3040 E CLIFF DR	Santa Cruz	Hassan Ayyad; Evelyn	9/6/2016	1
GOLDEN BUDDHA	9071 SOQUEL DR	Aptos	HELEN	6/20/2016	3
MING'S	4720 SOQUEL DR	Soquel	IRENE SZETO	2/11/2016	1
GEISHA	200 MONTEREY AVE	CAPITOLA	Annop Hongwathanachai	8/23/2016	1
MIYAKO JAPANESE RESTAURAN	1820 41ST AVE	Capitola	KWANG SOOK KIM	4/7/2016	1
GOLDEN FU WAH	4610 SOQUEL DR	Soquel		11/22/2016	2
PANDA INN	783 RIO DEL MAR BLVD	Aptos	KHIN WYNN CHAU	1/28/2016	1
PEKING RESTAURANT	2623 41ST AVE	Soquel	DANIEL&JUDY ZHU	5/23/2016	1
WASABI TAPAS SUSHI	3555 CLARES ST	Capitola	WILAT SVENDSON Yingnan Hu.	9/6/2016	1
THAI BASIL	210 MONTEREY AVE	Capitola	VINCENT	3/25/2016	1
STAR OF SIAM	3005 PORTER ST	SOQUEL	MIKE JANTARO	6/2/2016	1
KAITO	830 41ST AVE	Capitola	Kouji	3/25/2016	1
ZAMEEN RESTAURANT/DEER VA	851 41ST AVE	Santa Cruz	KEIKO&MASAO NAKAGAWA	4/12/2016	1
UNCLE KWOK'S	7960 SOQUEL DR	APTOS	AARON KWOK	8/17/2016	1
SUSHI GARDEN	820 BAY AVE	Capitola	ANDY-MANAGER	2/17/2016	1
BANGKOK WEST	2505 CABRILLO COLLEGE DR	Aptos	SUPACHAI WOTANEDTUM	8/23/2016	1
DYNASTY RESTAURANT	3601 PORTOLA DR	SANTA CRUZ	Yaozong Ma	1/14/2016	1
MAYFLOWER	3555 CLARES ST	CAPITOLA	PERRY CHOY	5/24/2016	1
HONG KONG GARDEN RESTAUR	14 SEASCAPE VILLAGE	Aptos	BENSON GONG	3/30/2016	1
CHINESE VILLAGE	3780 CAPITOLA RD	Santa Cruz	SALLY WONG	5/11/2016	1
BAMBOO GARDEN	3744 CAPITOLA RD	Santa Cruz	BILL LAU	5/4/2016	1
PANDA EXPRESS	2740 41ST AVE	Soquel	Sandy Alonzo	2/16/2016	1
CANTON ASIAN CUISINE	900 41ST AVE	Capitola	Miranda	5/11/2016	1
MICHOACAN TAQUERIA	21401 E CLIFF DR	Santa Cruz	MARIO MALDONADO	2/17/2016	1
LITTLE TAMPICO	2605 MAIN ST	SOQUEL	SAID KARRSLI	2/11/2016	1
THAI CUISINE SAWASDEE	5050 SOQUEL DR	SOQUEL	BILL HONGMANEE	6/2/2016	1

# Annual Facilities by Classification Summary Report

1/18/2017

2:45:17PM

2016

Food Service Facility Inspections

## Classification

Facility Name:	Address:	City:	Contact Name:	Last Inspection:	Inspections:
<b>Restaurant</b>					
TACO BELL	2730 41ST AVE	SOQUEL	YESENIA ELISEA	2/16/2016	1
MANUEL'S MEXICAN RESTAURANT	261 CENTER AVE	Aptos	LEONARDO SANTANA	12/20/2016	15
MARGARITAVILLE	221 ESPLANADE	Capitola	SARAH AND IAN	8/16/2016	1
EL CHINO	2525 SOQUEL DR	Santa Cruz	Maria Gallardo	1/14/2016	1
EL TORO BRAVO	123 MONTEREY AVE	Capitola	Kristie Baron	6/1/2016	1
TAQUERIA VALLARTA no.2	893 41ST AVE	Santa Cruz	ROBERTO DELATORRE	5/24/2016	1
TAQUERIA TEPEQUE	3555 CLARES ST	Capitola	ESPERANZA MALDONADO	4/8/2016	1
CASA ROSITA'S MEXICAN REST.	2608 PORTOLA DR	SANTA CRUZ	LARRY CORUM	8/17/2016	1
LETTY'S TAQUERIA	4637 SOQUEL DR	Soquel	JUAN ZACARIUS	6/15/2016	1
RIO DEL MAR MEXICAN CUISINE	9067 SOQUEL DR	Aptos	BLANCA MORENO	4/13/2016	1
TORTILLA FLATS	4616 SOQUEL DR	Soquel	JUAN MARTINEZ	2/18/2016	1
SOFIA'S TAQUERIA	112 RANCHO DEL MAR	Aptos	MARTHA VALENCIA	5/6/2016	1
BASKIN ROBBINS	100 RANCHO DEL MAR	Aptos	KEANG LEE	4/25/2016	1
ASIAN EXPRESS	1955 41ST AVE	Capitola	My Nguyen	3/17/2016	1
AMBROSIA	207 SEARIDGE RD	Aptos	BHUPI SINGH	5/23/2016	1
CHAMINADE CONFERENCE CENTER	1 CHAMINADE LN	Santa Cruz	MIKE LACHICA MICHAEL LACHICA	11/22/2016	5
HOME	3101 MAIN ST	Soquel		8/4/2016	1
THE HIDEOUT	9051 SOQUEL DR	APTOS	Pete Vomvolakis/Austin Welch	4/13/2016	1
SHOWTIME PIZZERIA	98 RANCHO DEL MAR	Aptos	JOSE GONZALES	5/6/2016	1
PERSEPHONE	7945 SOQUEL DR	Aptos	MILES POTTER	7/19/2016	2
UPPER CRUST PIZZA	2501 SOQUEL DR	Santa Cruz	ERNESTO CHAVEZ	2/18/2016	1
PLEASURE PIZZA	4000 PORTOLA DR	Santa Cruz	MICHAEL BLECKMAN	8/17/2016	1
MANGIAMO	783 RIO DEL MAR BLVD	Aptos	FRANK EASTERLY	1/28/2016	1
EAST END GASTROPUB	1501 41ST AVE	Capitola	Jeoffrey Hargrave DAVE TERWILLIGER	2/26/2016	1
PIZZA MY HEART Esplanade	209 ESPLANADE	Capitola	Britney	8/4/2016	1
DOMINOS PIZZA	3555 CLARES ST	Capitola	JUAN CHIVARRA	4/26/2016	1
MOUNTAIN MIKE'S PIZZA	3715 PORTOLA DR	Santa Cruz	Ash Sangh	8/4/2016	1
ROUND TABLE PIZZA II	2690 41ST AVE	Soquel	CHRIS SWANSON	5/26/2016	1
PIZZA 1	253 CENTER ST	Aptos	ANTONIO REYNEA	8/17/2016	1
SIDS SMOKEHOUSE & GRILL	10110 SOQUEL DR	Aptos	JOHN SIDDALL	12/6/2016	4
VILLAGE HOST PIZZA & GRILL	4 SEASCAPE VILLAGE	Aptos	Cypress Management	3/30/2016	1
MR TOOT'S CAFÉ	221 ESPLANADE	Capitola	BOB DUNCAN	8/16/2016	1
TAQUERIA LOS GORDOS	7488 SOQUEL DR	Aptos	JESUS TORRES ANGULO	2/18/2016	1
RED APPLE CAFÉ	783 RIO DEL MAR BLVD	APTOS	Jaime Galves	1/28/2016	1
SILVER SPUR	2650 SOQUEL DR	Santa Cruz	MIKE HOPPER	6/29/2016	1
SUNRISE CAFÉ	4718 SOQUEL DR	Soquel	ROBERTO DIAZ	8/18/2016	1

# Annual Facilities by Classification Summary Report

1/18/2017

2:45:17PM

2016

Food Service Facility Inspections

## Classification

Facility Name:	Address:	City:	Contact Name:	Last Inspection:	Inspections:
<b>Restaurant</b>					
TACO BELL II	7887 SOQUEL DR	Aptos	Thomas Smith	4/25/2016	1
CLIFF CAFE	815 41ST AVE	Santa Cruz	SUSAN HOMER	8/23/2016	1
COOK HOUSE	706 CAPITOLA AVE	Capitola	CAROL CHANDLER	2/10/2016	1
SURF CITY COFFEE	9105 SOQUEL DR	Aptos	CHRIS GARCIA	8/18/2016	1
MCDONALD'S	1760 41ST AVE	Capitola	GABRIEL GUZMAN	5/25/2016	1
DAIRY QUEEN	816 BAY AVE	Capitola	Alex (Manager) MICHAEL BABIC	8/22/2016	1
KENTUCKY FRIED CHICKEN no.9	150 RANCHO DEL MAR	Aptos	Yesenia Carrisosa	4/22/2016	1
ALOHA GRILL	1700 PORTOLA DR	SANTA CRUZ	Numa Trepanier	1/14/2016	1
SNOW WHITE DRIVE IN	223 STATE PARK DR	Aptos	Buy Leang	5/24/2016	1
7_11	3036 PORTOLA DR	Santa Cruz	Martin Mares	1/14/2016	1
BURGER KING	2001 41ST AVE	CAPITOLA	Steve Thomas	3/25/2016	1
CAPITOLA MALL	1855 41ST AVE	Capitola	TIM RICKER	3/15/2016	1
7-ELEVEN	1875 SOQUEL DR	Santa Cruz	NADAR NADERI	6/7/2016	1
TAQUERIA BAJA	200 MONTEREY AVE	Capitola	THOMAS LIDERMAN	2/18/2016	1
SEASCAPE SPORTSCLUB	1505 SEASCAPE BLVD	Aptos	PATTY	3/30/2016	1
ERIK'S DELI II	102 RANCHO DEL MAR	Aptos	ERIC RIEPE	4/25/2016	1
ERIK'S DELI I	1475 41ST AVE	Capitola	Katie Johnson	1/14/2016	1
GARDEN LIQUORS & DELI	1815 SOQUEL DR	Santa Cruz	JUDY FASSIO	6/29/2016	1
L & L HAWAIIAN BARBECUE	460 7TH AVE	Santa Cruz	William Wong	5/31/2016	1
BAY BAR AND GRILL	209 ESPLANADE	Capitola	Michael/Patrick Lynn	1/26/2016	1
PIXIE DELI	111 VENETIAN RD	Aptos	GREG DUNN	8/10/2016	1
CROWN CAFE	3555 CLARES ST	Capitola	RON CLEMENTS JR.	4/26/2016	1
PACIFIC COFFEE ROASTING CO.	7554 SOQUEL DR	Aptos	DENA, TOM HOPE	4/25/2016	1
SUBWAY	1220 41ST AVE	Capitola	JOSE	2/17/2016	1
SALSA'S TACO BAR	1710 BROMMER ST	Santa Cruz	MARIA VALENCIA	3/25/2016	1
WHALE CITY BAKERY	490 HWY 1	Davenport	Kristen Raugust	2/12/2016	1
WHARFHOUSE RESTAURANT	1400 WHARF RD	Capitola	WILLIE CASE	8/9/2016	1
BAGELRY	4763 SOQUEL DR	Soquel	Savine Clark	8/11/2016	1
SWEET PEA CAFE AND CATERING	2121 41ST AVE	Capitola	MICHAEL MCBRIDE	8/23/2016	1
CAFE D'ANNA	2841 PORTER ST	Soquel	SUSAN KIM	8/18/2016	2
ZAMEEN CUISINE	7528 SOQUEL DR	Aptos	ED	2/18/2016	1
NEW LEAF COMMUNITY MARKET	1210 41ST AVE	Capitola	Julia Montagne	4/8/2016	1
ERIKS DELI	1664 SOQUEL DR	Santa Cruz	RICK OETTINGER	1/14/2016	1
HERNANDEZ MARKET	3790 PORTOLA DR	Santa Cruz	DIEGO HERNANDEZ	2/18/2016	1
FULL OF BEANS	10 SEASCAPE VILLAGE	Aptos	Russell Sandhson	3/30/2016	1
SUBWAY 2	2740 41ST AVE	Soquel	DULCE MARTINEZ	2/17/2016	1

# Annual Facilities by Classification Summary Report

1/18/2017

2:45:17PM

2016

Food Service Facility Inspections

## Classification

Facility Name:	Address:	City:	Contact Name:	Last Inspection:	Inspections:
<b>Restaurant</b>					
LIVE OAK MEAT DEPARTMENT	1655 17TH AVE	Santa Cruz	CARLOS SUAREZ	8/17/2016	1
LUCKY	1475 41ST AVE	Capitola	Joseph Porter	3/25/2016	1
NOB HILL FOODS	809 BAY AVE	Capitola	GUSTAVO Michael Ruiz	4/25/2016	1
WHOLE FOODS	1710 41ST AVE	Capitola	Mike McCallum	4/7/2016	1
DELUXE FOODS	783 RIO DEL MAR BLVD	Aptos	GEORGE SIERRA	1/26/2016	1
FREEDOM MEAT LOCKER	160 HI GRADE LN	Freedom	DEBBIE WALKER HOWARD W/	1/13/2016	1
BUZEN	509 BAY AVE	Capitola	Perry Kurby	8/22/2016	1
PALM DELI & MARKET	3000 VALENCIA AVE	Aptos	ERICKA GLAUM Erica Glaum	8/10/2016	1
TRADER JOE'S	3555 CLARES ST	Capitola	BROWN PROPERTIES	8/22/2016	1
SAFEWAY	16 RANCHO DEL MAR	Aptos	RUBEN HERNANDEZ	2/25/2016	1
SAFEWAY 2	2720 41ST AVE	Soquel	SCOTT HUBBARD	8/4/2016	3
DEKE'S MARKET AND DELI	334 7TH AVE	Santa Cruz	DAMIAN RAMIREZ	9/14/2016	1
SOUZA'S ICE CREAM	200 MONTEREY AVE	CAPITOLA	JOE GOMEZ	2/18/2016	1
ROUX DAT	3555 CLARES ST	Capitola	Chad Glassley	4/8/2016	1
CARUSO'S	115 SAN JOSE AVE	Capitola	MELISSA SERRITENO DAVIDE	10/12/2016	1
ALDO'S ITALIAN BAKERY	4628 SOQUEL DR	Soquel	Greg Bailey	2/9/2016	1
SHERRI'S COOKIES	1855 41ST AVE	Capitola	JIM KHATIBI	9/6/2016	1
DONUT STATION	718 CAPITOLA AVE	Capitola	Houg Khunthea	2/10/2016	1
DUNLAP'S DONUTS II	3791 PORTOLA DR	Santa Cruz	Aly Trinh Kevin Sam	2/9/2016	1
FERRELL'S DONUTS	1751 17TH AVE	Santa Cruz	MICHAEL MORSE	8/25/2016	1
GAYLE'S BAKERY	504 BAY AVE	Capitola	CATHY GETTY	2/10/2016	1
THE JERK HOUSE	2525 SOQUEL DR	SOQUEL	AARON BISTRIN	8/25/2016	1
COFFEETOPIA	3701 PORTOLA DR	Santa Cruz	DAVE LARKIN	2/10/2016	1
FIVE GUYS BURGERS AND FRIES	1855 41ST AVE	CAPITOLA	CORPORATE	5/4/2016	1
PANADERIA EL ROSAL BAKERY	1513 E CLIFF DR	Santa Cruz	Yanet Hernandez GEORGE HEF	8/25/2016	1
THE UGLY MUG	4640 SOQUEL DR	Soquel	STEVE VOLK	8/16/2016	1
GYROS AND GRILL EXPRESS	1855 41ST AVE	CAPITOLA	BEN AHMADI	3/15/2016	1
iCRAVE	1601 41ST AVE	CAPITOLA	ISARA CHONGPIYALERT	5/25/2016	1
SEASCAPE FOODS	19 SEASCAPE VILLAGE	Aptos	DAN HUNT	3/30/2016	1
PAULA'S BROOKLYN CAFÉ	3500 PORTOLA DR	Santa Cruz	ROBERTO HERNANDEZ	2/16/2016	1
NORMA JEANS COFFEE	8043 SOQUEL DR	Aptos	CATHY DELEON	2/18/2016	1
US MEAL	21505 E CLIFF DR	Santa Cruz	ROGER BARNES	8/25/2016	1
THE FARM BAKERY	6790 SOQUEL DR	Aptos	BETH MARTORANO	4/22/2016	1

**Business Type Summary: Restaurant**

**Businesses Inspected: 239**

**Total Inspections: 282**

# Annual Facilities by Classification Summary Report

1/18/2017

2:45:17PM

2016

Food Service Facility Inspections

## Classification

Facility Name:	Address:	City:	Contact Name:	Last Inspection:	Inspections:
<b>School/Church</b>					
TWIN LAKES BAPTIST CHURCH	2701 CABRILLO COLLEGE DR	SOQUEL	LEONARD DUECK	10/24/2016	1
COASTLANDS CHURCH	280 STATE PARK DR	APTOS	KEVIN KAMMERMANN	10/19/2016	1
RESURRECTION CHURCH	7600 SOQUEL DR	APTOS	KAREN VICTORINA	10/24/2016	1
SHORELIFE COMMUNITY CHURC	875 MONTEREY AVE	CAPITOLA	TREVOR LEE	10/18/2016	1
CAMP ST. FRANCIS	2320 SUMNER AVE	APTOS	BROTHER Michael Herbers	10/19/2016	1
TEMPLE BETH EL	3055 PORTER GULCH RD	APTOS	Ryvanna Lewis	10/24/2016	1
CABRILLO COLLEGE	6500 SOQUEL DR	Aptos	JOE NUGENT	8/31/2016	1
GOOD SHEPHERD SCHOOL	2707 MATTISON LN	SANTA CRUZ	DIANE RABAGO	10/11/2016	1

**Business Type Summary: School/Church**

**Businesses Inspected: 8**

**Total Inspections: 8**

**Grand Total Businesses Inspected: 281**

**Grand Total Inspections: 328**



# Industrial Pretreatment Facility Summary Report

1/18/2017

4:08:06PM

Inspections Between 1/1/2016 and 1/1/2017

Facility Name:	Address:	City:	Contact Name:	Inspection Date:	# Visits:
SOQUEL H2O POLO GROUNDS	2255 HUNTINGTON DR	Aptos		2/16/2016	1
CHEVRON	7719 SOQUEL DR	APTOS		6/14/2016	
EARTHWORKS				11/30/2016	

<b>Business Type Summary:</b>	<b>Total of Businesses Visited:</b>	<b>3</b>
	<b>Total of Visits:</b>	<b>1.00</b>

## Car Wash

SHELL GAS AND CARWASH	2700 SOQUEL AVE	Santa Cruz	LOWE	10/12/2016	1
MASTER CAR WASH	2110 41ST AVE	Capitola	JAIME MARTINEZ	10/12/2016	1
BAY AVE CAR WASH	821 BAY AVE	Capitola	JIM/VICKI BOWMAN	10/13/2016	1
YOU DO IT CAR WASH	3912 SOQUEL DR	Soquel	KATHY GRAFF	12/20/2016	3
CRUZ CAR WASH	2731 41ST AVE	Soquel	JEREMY LEZIN	10/12/2016	2

<b>Business Type Summary:</b>	<b>Total of Businesses Visited:</b>	<b>5</b>
	<b>Total of Visits:</b>	<b>8.00</b>

## Dry Cleaner

VAPOR CLEANERS	415 TROUT GULCH RD	Aptos	Sarah Munoz	3/9/2016	1
CLASSIC CLEANERS	809 BAY AVE	Capitola	PAMELA WHITTINGTON	3/9/2016	1
CAPITOLA CLEANERS	1820 41ST AVE	Capitola	DONG OH	3/3/2016	5
MASTER CLEANERS	2660 41ST AVE	Soquel	DAE KIM	3/3/2016	1
KINGS CLEANERS	3908 CAPITOLA RD	Capitola	KWANG YEOUL JIN	3/3/2016	1
EAST CLIFF ONE HOUR DRY CL	1503 E CLIFF DR	Santa Cruz	JUAN JOSE OLVERA	3/3/2016	1
DEL MAR CLEANERS APTOS	2 RANCHO DEL MAR	Aptos	MICHAEL CHON	3/9/2016	1
SEASCAPE CLEANERS	13 SEASCAPE VILLAGE	Aptos	PHUONG NGUYEN	3/9/2016	1

<b>Business Type Summary:</b>	<b>Total of Businesses Visited:</b>	<b>8</b>
	<b>Total of Visits:</b>	<b>12.00</b>

## Machine Shop

MID-COUNTY AUTO SUPPLY	4310 CAPITOLA RD	Capitola	BUZZ ANDERSON	10/26/2016	1
------------------------	------------------	----------	---------------	------------	---

# Industrial Pretreatment Facility Summary Report

1/18/2017  
4:08:06PM

Inspections Between 1/1/2016 and 1/1/2017

Facility Name:	Address:	City:	Contact Name:	Inspection Date:	# Visits:
MATHER MACHINING	933 CHITTENDEN LN	Capitola	DAVE MATHER	11/17/2016	1
STRITE MACHINING	1257 THOMPSON AVE	Santa Cruz	John Strite	3/3/2016	1
R. F. JOHNSON MANUFACTURING	1257 THOMPSON AVE	Santa Cruz	RICHARD JOHNSON	3/3/2016	1
DOERKSEN PRECISION PRODUCTS	2725 CHANTICLEER AVE	Santa Cruz	DAN DOERKSEN	11/22/2016	2
CONCEPTS 2	2829 S RODEO GULCH RD	Soquel	MIKE LIDICO	10/25/2016	1
ALPHA MACHINE	933 CHITTENDEN LN	Capitola	PENO SARALIEV	10/25/2016	1
GARLAND PRECISION	4000 CORDELIA LN	Soquel	GLENN GARLAND	11/3/2016	1
DESIGN OCTAVES	2701 RESEARCH PARK DR	Soquel	DAN MC CABE	10/25/2016	1
PRUNELLA MACHINE	986 TOWER PL	Santa Cruz	SCOTT PRUNELLA	10/27/2016	1

**Business Type Summary:**

<b>Total of Businesses Visited:</b>	<b>10</b>
<b>Total of Visits:</b>	<b>11.00</b>

## Miscellaneous Food

AEGIS ASSISTED LIVING	125 HEATHER TER	Aptos	JOSE GUDINEZ	8/23/2016	4
-----------------------	-----------------	-------	--------------	-----------	---

**Business Type Summary:**

<b>Total of Businesses Visited:</b>	<b>1</b>
<b>Total of Visits:</b>	<b>4.00</b>

## Miscellaneous Industrial

SOQUEL H2O TANNERY	5735 SOQUEL DR	Soquel	Christine Mead	2/4/2016	2
EARTHWORKS	310 KENNEDY DR	Capitola		12/8/2016	3
PLACTORY, THE	986 TOWER PL	Santa Cruz	RICK BECKENDORF	7/21/2016	1
SOQUEL H2O MAIN	3325 N MAIN ST	Soquel	Christine Mead	2/5/2016	2
SOQUEL H2O GARNET	307 GARNET ST	Capitola	Christine Mead	1/20/2016	2

**Business Type Summary:**

<b>Total of Businesses Visited:</b>	<b>5</b>
<b>Total of Visits:</b>	<b>10.00</b>

## No Discharge

SANTA CRUZ METAL POLISHING	2535 7TH AVE	Santa Cruz	IAN KELLY	11/17/2016	1
PLASCO	2829 S RODEO GULCH RD	Soquel	MICHAEL LODICO	11/3/2016	1
NIEBANK TOOLING CONCEPTSC	2829 S RODEO GULCH RD	Soquel	PAUL NIEBANK	10/25/2016	1

# Industrial Pretreatment Facility Summary Report

1/18/2017

4:08:06PM

Inspections Between 1/1/2016 and 1/1/2017

Facility Name:	Address:	City:	Contact Name:	Inspection Date:	# Visits:	
<b>Business Type Summary:</b>					<b>Total of Businesses Visited:</b>	<b>3</b>
					<b>Total of Visits:</b>	<b>3.00</b>

## Photographic

CALIFORNIA RADIOGRAPHICS	3335 SOQUEL DR	Soquel	MARLIN HENTON	1/12/2016	2	
<b>Business Type Summary:</b>					<b>Total of Businesses Visited:</b>	<b>1</b>
					<b>Total of Visits:</b>	<b>2.00</b>

## Vehicle Service Facility

PG&E	615 7TH AVE	Santa Cruz	RON MIRANDA	7/21/2016	1
CLASSICS SANTA CRUZ	2846 SOQUEL AVE	Santa Cruz	MATT BLAZ	9/21/2016	1
BOBBY'S PIT STOP	1655 COMMERCIAL WAY	Santa Cruz	BOBBY HUCKABY	10/5/2016	1
NATE SMITH OPTIMAL AUTO CARE	2335 SOQUEL DR	Santa Cruz	NATE SMITH	9/27/2016	1
PHIL'S AUTO BODY & COLLISION	2750 SOQUEL AVE	Santa Cruz	PHIL CHADD	9/14/2016	1
SANTA CRUZ MOTORCYCLE SERVICE	1700 COMMERCIAL WAY	Santa Cruz	Roddy Larsen	9/15/2016	1
ROSSI'S TOWING BODY SHOP	203 CAPITOLA EXT	Santa Cruz	JUDY ROSSI	10/5/2016	1
RANDY'S AUTO REPAIR	1125 17TH AVE	Santa Cruz	MIKE SINGER	9/13/2016	1
MICK'S AUTOMOTIVE	1257 THOMPSON AVE	Santa Cruz	TRACY COTTEN	10/6/2016	1
PEARCE EUROPEAN & JAPANESE SERV	7000 SOQUEL AVE	Santa Cruz		10/5/2016	1
R&D MOTORSPORTS	3301 PORTOLA DR	Santa Cruz	RICK BURROS	1/27/2016	1
HERTZ RENT A CAR	7000 SOQUEL AVE	Santa Cruz		10/5/2016	1
OPAL CLIFFS AUTO CENTER	4001 PORTOLA DR	Santa Cruz	KIMM HOGUE	9/21/2016	1
PRESICION	2831 SOQUEL AVE	Santa Cruz		9/21/2016	1
CITY AUTO BODY	980 17TH AVE	Santa Cruz	Francisco Velasquez	9/13/2016	1
CITY OF CAPITOLA P.W. YARD	430 KENNEDY DR	Capitola	EDDIE GARCIA	8/4/2016	1
CENTRAL COAST FOUR WHEEL DRIVE	2852 SOQUEL AVE	Santa Cruz	GREG LAZAROTTI	9/21/2016	1
BROMMER YARD	2700 BROMMER ST	Santa Cruz	JIM SMRT	9/21/2016	1
SAABORAMA	2335 SOQUEL DR	Santa Cruz	DAN JOEL	9/27/2016	1
HENDERSON AUTOMOTIVE	982 17TH AVE	Santa Cruz	GREG HENDERSON	9/13/2016	1
CYCLE IMAGERY	2871 SOQUEL AVE	Santa Cruz	JOE DELNEGRO	9/21/2016	1
Moore and Son's Motorcycles	21431 E CLIFF DR	Santa Cruz	John Moore	10/12/2016	1
CLASSIC HONDA	1601 MANSFIELD ST	Santa Cruz	PAUL	9/25/2016	1

# Industrial Pretreatment Facility Summary Report

1/18/2017  
4:08:06PM

Inspections Between 1/1/2016 and 1/1/2017

Facility Name:	Address:	City:	Contact Name:	Inspection Date:	# Visits:
OCEAN HONDA	3801 SOQUEL DR	Soquel	STEVE KING	9/27/2016	1
OIL CAN HENRY'S	2878 S. Rodeo Gulch	Santa Cruz	CABRERA	9/15/2016	1
POWDER COAT IT	7000 SOQUEL AVE	SOQUEL		10/5/2016	1
KING SMOG	2335 SOQUEL DR	SANTA CRUZ	KING	9/27/2016	1
ROC AUTO	2335 SOQUEL DR	SANTA CRUZ		10/5/2016	1
APTOS TIRE & AUTO CARE	8028 SOQUEL DR.	APTOS		9/27/2016	1
LEDYARD PERFORMANCE FOODSERVIC	1047 17TH AVE	SANTA CRUZ	JOHN PLUMB	10/6/2016	
SEARS	4015 CAPITOLA RD	Capitola	RILEY	10/5/2016	1
STUART AUTOMOTIVE	4003 CORDELIA LN	Soquel	DOUG CLARK	9/28/2016	1
D & K VW SERVICE	2551 S RODEO GULCH RD	Soquel	DAVID DEJESUS	9/15/2016	1
TIGER MOTORS	2810 SOQUEL AVE	Santa Cruz	GARRET COTTON	9/21/2016	1
FEDERAL EXPRESS	2660 RESEARCH PARK DR	Soquel	GREG ESTEDAN	9/28/2016	1
RUSH MOTORSPORTS	2848 SOQUEL AVE	Santa Cruz	DENNIS RUSH	9/21/2016	1
TOYOTA OF SANTA CRUZ	4200 AUTO PLAZA DR	Capitola	STEVE VOLLERS	2/10/2016	3
DMV CLINIC AUTO REPAIR	2335 SOQUEL DR	Santa Cruz	NATHANSPARKS	9/27/2016	1
DOS AMIGOS AUTO REPAIR	2964 SOQUEL AVE	Santa Cruz	SAUL PEREZ	9/21/2016	1
ANTHONY'S AUTO DISMANTLING	980 17TH AVE	Santa Cruz		9/13/2016	1
RICK'S AUTO SHOP	1050 17TH AVE	Santa Cruz	RICKY ALAN PEARCE	9/13/2016	1
EBERTS VW REPAIR	2670 17TH AVE	Santa Cruz	DAVID M EBERT	9/15/2016	1
SPECIALIZED AUTO	2415 CHANTICLEER AVE	Santa Cruz	LARRY RICHMAN	10/5/2016	1
GULUARTE'S AUTO	980 17TH AVE	Santa Cruz	JESUS GULUARTE	9/13/2016	1
B&B SMALL ENGINE REPAIR	1700 COMMERCIAL WAY	Santa Cruz	BILL BRUCE	9/15/2016	1
AGUILAR AUTO REPAIR	2661 MATTISON LN	Santa Cruz	VICTOR AGUILAR	5/26/2016	1
GINO'S AUTO RECYCLING	3315 PORTOLA DR	Santa Cruz	GINO TAYEBI	1/27/2016	1
AUTO-MOTIVES	3098 WINKLE AVE	Santa Cruz	JOSHUA DOAK	10/5/2016	1
OLD VOLKS HOME	3921 SOQUEL DR	Soquel	LIDRADO MENDOZA	9/27/2016	1
KRAFT'S BODY SHOP	6100 SOQUEL AVE	Santa Cruz	TODD KRAFT	9/21/2016	1
ENTERPRISE CAR RENTAL	2724 SOQUEL AVE	Santa Cruz	GARY LOWE	9/21/2016	1
BRANCIFORTE AUTOMOTIVE REPAIR	10105 SOQUEL DR	Aptos	LOU BRANCIFORTE	9/27/2016	1
WILSON'S TIRE SERVICE	4665 SOQUEL DR	Soquel	JUAN ESCAMILLA	9/27/2016	1
SMOG CHECK	3921 SOQUEL DR	Santa Cruz	JOHN GIANOPOULOS	9/27/2016	1
MOORE & SONS OUTBOARDS	21431 E CLIFF DR	Santa Cruz	JIM MOORE	10/12/2016	1
MOULTON'S UNION	201 SEARIDGE RD	Aptos	LARRY ROBERT	9/28/2016	1
PLAZA SHELL	1649 41ST AVE	Capitola	Ever Dorres	2/10/2016	1

# Industrial Pretreatment Facility Summary Report

1/18/2017

4:08:06PM

Inspections Between 1/1/2016 and 1/1/2017

Facility Name:	Address:	City:	Contact Name:	Inspection Date:	# Visits:
SOQUEL 76	4860 SOQUEL DR	Soquel	Marcos Adan	6/15/2016	1
Aptos Village Garage	8028 SOQUEL DR	Aptos	CHRIS BRIDGES	9/27/2016	2
41ST AVE UNOCAL	2195 41ST AVE	Capitola	MIKE PINKHAM	6/14/2016	1
AJ's FUEL MARKET	5955 SOQUEL DR	Soquel	AJ Javed	9/27/2016	2
CAPITOLA COAST GAS STATION	2178 41ST AVE	Capitola	STEVE SARGENT	6/14/2016	1
GLENN P DAVIS AUTO REPAIR	3503 PORTOLA DR	Santa Cruz	GLENN DAVIS	1/27/2016	1
AUTO SPA	720 CAPITOLA AVE	Capitola	Manuel Monjaraz	10/18/2016	1
SUBARU-MAZDA	4100 AUTO PLAZA DR	Capitola		7/20/2016	2
SANTA CRUZ TIRE AND AUTO	2840 SOQUEL AVE	Santa Cruz	JAMES JORDAN	9/21/2016	1
AUTO EXPRESS	2842 SOQUEL AVE	Santa Cruz	PAUL SALAZAR	9/21/2016	1
EMILE'S SPORTS CAR PERFORMANCE	3501 PORTOLA DR	Santa Cruz	EMILE DEL AQUILLA	2/10/2016	1
CHEVRON	1650 41ST AVE	Capitola	Shari Pinkerton	6/17/2016	1
GOODYEAR TIRE CENTER	3800 CAPITOLA RD	Capitola	DAVID ALLEN	7/20/2016	1
MID COUNTY HONDA ACURA	1521 COMMERCIAL WAY	Santa Cruz	ANDREW MCKENZIE	10/5/2016	1
CARMAT COLLISION	1650 MANSFIELD LN	Santa Cruz	MATTHEW KOUE	5/26/2016	1
ED'S PORTOLA ARCO	3801 PORTOLA DR	Santa Cruz	ED RODEMEYER	1/26/2016	1
UNITED RENTAL	1835 SOQUEL DR	Santa Cruz	JOE MERAZ	9/27/2016	1
IO MOTORS	2852 SOQUEL AVE	Santa Cruz	RODNEY IO	9/21/2016	1
CIRCLE STAR MOTORS	2750 SOQUEL AVE	Santa Cruz	EDER	9/14/2016	1
ALAN RICE AUTOMOTIVE	3545 SOQUEL DR	Soquel	ALAN RICE	6/16/2016	1
SOQUEL AUTO REPAIR	3621 SOQUEL DR	Soquel	FARDAD VAZIRI	6/15/2016	1
FAST LANE PORSCHE REPAIR	2831 SOQUEL AVE	Santa Cruz	TIM BENSON	9/21/2016	1
NORAM AUTO SERVICE	2615 S RODEO GULCH RD	Soquel	JAMES KEEFER	9/28/2016	1
AA AUTO COLLISION CENTER	1240 THOMPSON AVE	Santa Cruz	BRIAN DEUTSCHER	10/13/2016	1
PHILS FOREIGN CAR	2846 SOQUEL AVE	Santa Cruz	PHIL MASON	10/12/2016	1
SANTA CRUZ GERMAN CAR SERVICE	2848 SOQUEL AVE	Santa Cruz	REBECCA AMIOT	9/21/2016	1
CATALPA ST GARAGE	2844 SOQUEL AVE	Santa Cruz	WAYNE STRONG	9/21/2016	1
A TOOL SHED	3700 SOQUEL AVE	Santa Cruz	BRAD ROBINSON	5/26/2016	1
KEN'S AUTO BODY	1226 BROMMER ST	Santa Cruz	KEN HEREDIA	9/15/2016	1
CABRILLO COLLEGE FLEET	6500 SOQUEL DR	Aptos	JOE NUGENT	9/27/2016	2
CHANDLER AUTOMOTIVE	2831 SOQUEL AVE	Santa Cruz	MARK CHANDLER	9/21/2016	1
HAYES EUROPEAN	1010 17TH AVE	Santa Cruz	JOHN HAYES	9/13/2016	2
LNR Auto Body	2640 17TH AVE	Santa Cruz	Larry Montanez	9/15/2016	1
HOLLOWAY'S SECOND CHANCE CYCLE	980 17TH AVE	SANTA CRUZ	Erin Espisito	11/16/2016	1

# Industrial Pretreatment Facility Summary Report

1/18/2017

4:08:06PM

Inspections Between 1/1/2016 and 1/1/2017

Facility Name:	Address:	City:	Contact Name:	Inspection Date:	# Visits:
HARBOR SERVICE STATION	2848 SOQUEL AVE	Santa Cruz	SCOTT SPRENGER	9/21/2016	1
TJS CLASSIC RESTORATION	2131 FREEDOM BLVD	Freedom		11/17/2016	1

<b>Business Type Summary:</b>	<b>Total of Businesses Visited:</b>	<b>93</b>
	<b>Total of Visits:</b>	<b>99.00</b>

## Winery

BARGETTO	3535 N MAIN ST	Soquel	Olivia Teutschel	2/2/2016	2
----------	----------------	--------	------------------	----------	---

<b>Business Type Summary:</b>	<b>Total of Businesses Visited:</b>	<b>1</b>
	<b>Total of Visits:</b>	<b>2.00</b>

<b>Grand Total of Businesses Visited:</b>	<b>130</b>
<b>Grand Total of Visits:</b>	<b>152.00</b>

# **ATTACHMENT C**

## **Enforcement Response and Fines**

**ENFORCEMENT RESPONSE AND FINES**

**I. SIGNIFICANT INDUSTRIAL USERS: SAMPLING, MONITORING, AND REPORTING**

Nature of Non-Compliance	Circumstance	Time Frame	Response
A. Failure of permitted discharger to notify of effluent limit violation or slug discharge	Not verbally reported.	24 hours after knowledge of violation or discharge	Letter of Violation (LOV): The SIU must correct problem immediately. The user must resample within 30 days and report on Self-Monitoring Report (provided by District) to demonstrate return to compliance. If a slug discharge occurs, then it is the responsibility of the business to resample to assure a return to compliance. Provide notice to the District within 15 days of measures taken.
	No notification to District	15 days	Administrative Order for the following: Require immediate response and return to compliance.
	No sample results	30 days	\$500 fine per each day of violation at the Board ' s discretion.
		60 days	Significant non-compliance. \$500 fine per each day of violation at the Board ' s discretion. Publication of violation in local newspaper.
	Known environmental or POTW damage	Anytime	Sewer service termination and recovery of estimated costs of remediation at the discretion of the Board of Directors of the District.
B. Minor sampling, monitoring, or reporting deficiencies (non-negligent, minor omissions of required attachments and data, computational, or other errors)	First Offense, submitted report by the deadline	Upon discovery	Phone call from Environmental Compliance Inspector instructing the following: submit report in its entirety with the errors corrected within 30 days after the initial due date of the report.
	Corrected report not received.	30 days after phone call	Letter of violation for the following: submit report in its entirety with the errors corrected within 30 days.
		60 days after report is due	Administrative order requiring corrections within 15 days of notification.
		90 days after report is due	\$200 fine per day until correct report is received at the Board ' s discretion.
C. Major or gross sampling, monitoring or reporting deficiencies (missing critical information) and any other deficiency deemed major by the District or its Board	First Offense, submitted report by the deadline	Upon discovery	Letter of Violation requiring the following: submit report in its entirety with the errors corrected within 30 days of the date of issuance of the Letter of Violation.
	Corrected report not received.	30 days after LOV date	\$200 fine per day until correct report is received at the Board ' s discretion.
	Corrected report not received.	60 days after LOV date	\$200 fine per day until correct report is received at the Board ' s discretion. Publication of the violation in local newspaper.
	Corrected report not received.	90 days after LOV date	Sewer Service Termination and Permit Revocation at the Board ' s discretion.



**I. SIGNIFICANT INDUSTRIAL USERS AND SPECIAL DISCHARGE PERMITS: SAMPLING, MONITORING, AND REPORTING (continued)**

Nature of Non-Compliance	Circumstance	Time Frame	Response
D. Failure of discharger to timely sample, monitor, or submit self-monitoring discharge report	First offense within 1 year	No later than 5 days after required submittal date	Letter of Violation instruction the following: submit required report within 15 days of the date of this letter
	Report still not received.	15 days after required submittal date	Administrative Order: require the report within 10 days.
	Report still not received.	45 days after required submittal	Significant Noncompliance. Publication in newspaper. Require report within 10 days.
	Report still not received.	60 days after required submittal	Administrative Order: require the report within 10 days. \$200 fine per day that the report is not received, at the Board ' s discretion.
	Report still not received.	90 days after required submittal	Sewer Service Termination and Permit Revocation at the Board ' s discretion.
	Second offense within 1 year	<1 year	Administrative Order: require the report within 10 days. Follow the steps starting at 45 days for the first offense above.
	Report still not received.	10 days	Follow the steps starting at 45 days for the first offense above.
E. Discharge without a permit or District approval.	1 <sup>st</sup> offense, <i>no environmental damage</i>	Upon discovery	Administrative Order requiring permit application, baseline monitoring report, and approval prior to further discharge.
	2 <sup>nd</sup> and subsequent offenses without permit application, no environmental damage	30 days	Significant Noncompliance. Administrative Order requiring permit application and approval prior to further discharge, \$500 fine per day of violation and publication in newspaper at Board ' s discretion.
	1 <sup>st</sup> offense, <i>environmental damage</i>	Upon discovery	Significant Noncompliance. Administrative Order requiring permit application and approval prior to future discharges, \$500 fine + recovery of cost for remediation at the Board ' s discretion, publication in newspaper.
	Subsequent discharges, environmental damage	30 days	Significant Noncompliance. Administrative Order requiring permit application and approval prior to future discharges, \$1000 fine + recovery of cost for remediation and sewer service termination at the Board ' s discretion, publication in newspaper.

**II. EFFLUENT LIMIT VIOLATIONS**

Nature of Non-Compliance	Circumstance	Time Frame	Response
A. Failure to meet final effluent limits or failure to meet interim limits(categorical, local, or prohibited limits)	First exceedance or less than TRC exceedance.	Immediately upon notification of exceedance.	Letter of Violation instructing the following: correct the problem causing the exceedance and resample and report sample results on Self-Monitoring Report within 30 days. If done on District ' s sampling period, District will resample within 30 days.
	Second exceedance	Immediately upon notification of exceedance.	Compliance Schedule to be determined by the District Engineer.
	Major violation that exceeds the limits by Technical Review Criteria (TRC-see definitions) of a single effluent limit	Immediately upon notification of exceedance.	Significant Noncompliance. Administrative Order to correct the problem(s) causing the exceedance and resample and report sample results on Self-Monitoring Report within 30 days. Publication in a local newspaper. If there is environmental damage, \$1000 fine per day of exceedance. The District can recoup the costs for environmental remediation, at the Board ' s discretion.
	Chronic violations: 66% or more of all the measurements taken for the same pollutant parameter exceed the same daily maximum limit or the same average limit in a six-month period (any magnitude of concentration over the most stringent limit), a numeric pretreatment standard or requirement, including instantaneous limits.		Significant Noncompliance. Administrative Order to correct the problem(s) causing the exceedance and resample and report sample results on Self-Monitoring Report within 30 days. Publication in a local newspaper. If there is environmental damage, \$1000 fine per day of exceedance. The District can recoup the costs for environmental remediation, and terminate sewer service at the Board ' s discretion.
	Additional Self-Monitoring Report still not received.	30 days after required submittal	Administrative Order: require the report within 15 days.
	Additional Self-Monitoring Report still not received.	45 days after required submittal	Significant Noncompliance. Publication in newspaper. Require report within 10 days.
	Additional Self-Monitoring Report still not received.	55 days after required submittal	Administrative Order: require the report within 10 days. \$500 fine per day that the report is not received, at the Board ' s discretion.
	Additional Self-Monitoring Report still not received.	65 days after required submittal	Sewer Service Termination and Permit Revocation at the Board ' s discretion.

**II. EFFLUENT LIMIT VIOLATIONS (continued)**

Nature of Non-Compliance	Circumstance	Time Frame	Response
B. Reported slug discharge	First offense, reported immediately, <i>no environmental damage.</i>	Immediate report upon knowledge of slug discharge	Letter of Violation: correct problem causing slug discharge, sample discharge and report sample results on Self-Monitoring Report within 30 days of slug.
	Second offense within 1 year, <i>no environmental damage</i>	<1 year	Administrative Order: cease slug discharges immediately and prevent future slug discharges. Sample discharge and report sample results on Self-Monitoring Report within 30 days of slug.
	Third and subsequent offenses, <i>no environmental damage</i>	<1 year	Significant noncompliance. Sewer service termination at Board ' s discretion, \$1000 fine per day of violation, and publication of violation in a newspaper.
	First offense: <i>interference, pass-through, or damage</i>	Immediate report upon knowledge of slug discharge	Significant Noncompliance- Administrative Order specifying the following: correct problem causing slug discharge, sample discharge and report sample results on Self-Monitoring Report within 30 days of slug. Publication in local newspaper. Board may recoup costs for any environmental remediation, damage to infrastructure, or any fines levied as a result of the slug.
	Second offense within 1 year: <i>interference, pass-through, or damage</i>	<1 year	Significant Noncompliance. \$1000 fine per day of slug discharge. Publication in newspaper. Sewer service termination at Board ' s discretion.
	Subsequent offenses with <i>interference, pass-through, or damage</i>	<1 year	Significant noncompliance. Sewer service termination at Board ' s discretion, \$1000 fine per day of violation, and publication of violation in a newspaper.

**III. SIGNIFICANT INDUSTRIAL USERS AND SPECIAL DISCHARGE PERMITS: NONCOMPLIANCE DETECTED THROUGH INSPECTION OR FIELD INVESTIGATION**

Nature of Non-Compliance	Circumstance	Time Frame	Response
A. Minor violation of sampling or analytical procedure	No evidence of intent or neglect. First offense within a year.	Upon Discovery	Letter of Violation (LOV) for the following: Correct problem during next sampling event. If sampling or analysis led to faulty results, must resample within 30 days.
	No evidence of intent or neglect. Second offense within a year.	<1 year repeat	Administrative Order for the following: Resample and analyze using correct procedure within 30 days.
	Resample for either circumstance not done within 30 days or third offense within a year	30 days, <1 year 3 <sup>rd</sup> repeat	Significant Noncompliance, Administrative Order for the following: Resample within 30 days, \$500 fine per each day of violation at the Board ' s discretion, publication in a newspaper.
	More than 3 offenses in a year or resample not done within 60 days	60 days, <1 year 4 <sup>th</sup> repeat	Sewer service termination and recovery of estimated costs of remediation at the Board ' s discretion.
B. Minor violation of permit conditions (Any violation not listed as major or deemed minor violation by the District or its Board)	No evidence of intent or neglect. First offense within a year.	Upon Discovery	Letter of Violation (LOV) for the following: Correct problem immediately.
	No evidence of intent or neglect. Second offense within a year.	<1 year repeat	Administrative Order for the following: Correct problem immediately.
	Problem not corrected within 30 days or third offense within a year	30 days, <1 year 3 <sup>rd</sup> repeat	Significant Noncompliance, Administrative Order for the following: Correct problem within 30 days, \$500 fine per each day of violation at the Board ' s discretion, publication in a newspaper.
	More than 3 offenses in a year or problem not corrected within 60 days	60 days, <1 year 4 <sup>th</sup> repeat	Sewer service termination and recovery of estimated costs of remediation at the Board ' s discretion.

**III. SIGNIFICANT INDUSTRIAL USERS AND SPECIAL DISCHARGE PERMITS: NONCOMPLIANCE DETECTED THROUGH INSPECTION OR FIELD INVESTIGATION (continued)**

Nature of Non-Compliance	Circumstance	Time Frame	Response
C. Major violation of permit condition (Improper disposal of waste or product, tampering with monitoring equipment, diluting effluent, not reporting a slug or accidental discharge, not having a spill prevention plan when a spill has occurred, and any other violation deemed major by the District or its Board).	No evidence of intent or neglect. First offense within a year.	Upon Discovery	Letter of Violation (LOV) for the following: Correct problem immediately.
	No evidence of intent or neglect. Problem not corrected within 30 days or second offense within a year.	<1 year repeat, 30 days	Significant Noncompliance. Administrative Order for the following: Correct problem immediately, \$1000 fine per each day of violation at the Board ' s discretion, publication in a newspaper.
	Problem not corrected within 60 days or third offense within a year	60 days, <1 year 3 <sup>rd</sup> repeat	Sewer service termination and recovery of estimated costs of remediation at the Board ' s discretion.

**IV. SIGNIFICANT INDUSTRIAL USERS AND SPECIAL DISCHARGE PERMITS: COMPLIANCE SCHEDULES**

<b>Nature of Non-Compliance</b>	<b>Circumstance</b>	<b>Time Frame</b>	<b>Response</b>
A. Reporting false information during compliance schedule.	Any instance	Immediately upon discovery	Significant noncompliance – request for criminal investigation. Judicial action, fines, and/or sewer service termination. Fine of \$1000 per offense. Publication in local newspaper.
B. Missed <u>interim</u> date.	Will not cause late final date or affect other interim dates.	15 days after due date	Letter of Violation: resume compliance schedule and do not miss future dates. Submit report within 10 days.
	Will result in other missed interim dates	15 days after due date	Significant noncompliance- Administrative Order requiring compliance of all other dates 10 days after previous dates set and submission of written progress report within 10 days. Publication in newspaper.
	No response.	10 days	\$500 fine per day of noncompliance, publication in a newspaper.
		90 days or more outstanding	\$500 fine per day of noncompliance, publication in a newspaper, sewer service termination at the Board ' s discretion.
C. Missed <u>final</u> date with no valid cause.	1 <sup>st</sup> offense	15 days after deadline	Significant noncompliance. Administrative Order to begin monitoring within 30 days. Publication in newspaper.
		30 days after deadline	Significant noncompliance. Administrative Order and/or judicial action. \$500 fine per day of noncompliance.
	2 <sup>nd</sup> offense or no action	60 days after deadline	Significant noncompliance. \$1000 fine per day of noncompliance.
	3 <sup>rd</sup> offense or no action	90 days after deadline	Sewer Service termination at Board ' s discretion.

**V. LIGHT INDUSTRY NONCOMPLIANCE**

Nature of Non-Compliance	Circumstance	Time Frame	Response
A. Failure of discharger to timely submit receipt/manifest or proof of grease trap, grease interceptor, or clarifier cleaning.	Light industry has not cleaned pretreatment device or has not provided proof of cleaning to the District	30 days past required pump date.	Phone call and/or verbal notification during site visit.
		60 days	Letter of Violation requiring proof of cleaning within 15 days.
		75 days	Administrative Order requiring proof of cleaning within 10 days.
		85 days	Significant non-compliance: require proof of cleaning within 10 days. \$500 fine per each day of violation at the Board ' s discretion. Publication of violation in local newspaper.
		95 days	Sewer service termination, at the Board ' s discretion.
		Anytime a grease removal device is past the District required pumping date.	Recovery of estimated costs of from any adverse effects of grease in the District ' s sewer line attributable to a light industry or any fines levied against the District from sanitary sewer overflows due to grease, at the Board ' s discretion.
B. Violation of required Best Environmental Management Practices (per District Code)	No evidence of intent or neglect. First offense within a year.	Upon Discovery	Phone call and/or verbal notification during site visit.
	No evidence of intent or neglect. Problem not corrected within 30 days or second offense within a year.	<1 year repeat	Corrective Action Letter: Correct problem immediately.
	Problem not corrected within 60 days or third offense within a year	30 days, <1 year 3 <sup>rd</sup> repeat	Administrative Order for the following: Correct problem immediately.
	More than 3 offenses in a year or problem not corrected within 90 days	60 days, <1 year 4 <sup>th</sup> repeat	Significant Noncompliance, Administrative Order for the following: Correct problem within 30 days, \$500 fine per each day of violation at the Board ' s discretion, publication in a newspaper.
	Problem ongoing or chronic	Chronic violation	Sewer service termination and recovery of estimated costs of remediation at the Board ' s discretion.

**V. LIGHT INDUSTRY NONCOMPLIANCE (continued)**

Nature of Non-Compliance	Circumstance	Time Frame	Response
C. Faulty pretreatment device, improper best management practices, or minor deficiencies discovered during inspections	No evidence of intent or neglect.	Upon Discovery	Written notification during site visit on inspection form.
	Not Corrected.	30 days	Corrective Action Notice: correct the problem immediately.
	Not Corrected.	60 days	Letter of Violation: Correct problem immediately.
	Not Corrected.	90 days	Administrative Order for the following: Correct problem within 30 days.
	Chronic Violation	Chronic, recurring	Significant Noncompliance: \$500 fine per each day of violation at the Board ' s discretion, publication in a newspaper.
D. Sanitary sewer overflow on private property that impacts the public, public property, public right-of-way, or a water body.	1 <sup>st</sup> offense reported to District, overflow stopped in a timely manner.	Immediately.	Letter of Violation instructing the following: correct the problem causing the overflow immediately or cease discharging. Submit a written report to the District within 15 days stating a corrective action plan, and the means to prevent repeat occurrences.
		15 days, no report received.	Letter of Violation requiring written report within 15 days.
		30 days, no report received.	Administrative Order requiring written report within 10 days.
		60 days, no report	Significant non-compliance: require written report within 10 days. \$500 fine per each day of violation at the Board ' s discretion. Publication of violation in local newspaper.
		90 days, no report	Sewer service termination, at the Board ' s discretion.
	1 <sup>st</sup> offense reported to District, overflow not stopped in a timely manner	Immediately.	Letter of Violation instructing the following: correct the problem causing the overflow immediately or cease discharging. Submit a written report to the District within 15 days stating a corrective action plan, and the means to prevent repeat occurrences and state a means to respond to overflows in a timely manner.
		No report received.	Follow enforcement path above, starting at 15 days, no report received.
	2 <sup>rd</sup> offense in either case (stopped in timely manner or not)	<1 year	Significant non-compliance: require written report within 15 days. \$500 fine per each day of violation at the Board ' s discretion. Publication of violation in local newspaper.
	3 <sup>rd</sup> offense in either case (stopped in a timely manner or not)	<1 year	\$1000 fine per day of overflow. Sewer service termination at the Board ' s discretion.
	Environmental Damage, District resources used, fines levied	Anytime	District will reserve the right to recoup costs of using District resources, to remediate any environmental damage, or any fines levied against the District as a result of the overflow.