



County of Santa Cruz

DEPARTMENT OF PUBLIC WORKS

701 OCEAN STREET, ROOM 410, SANTA CRUZ, CA 95060-4070
(831) 454-2160 FAX (831) 454-2385 TDD (831) 454-2123

THOMAS L. BOLICH
DIRECTOR OF PUBLIC WORKS

January 12, 2009

MR. ROGER BRIGGS
CALIFORNIA REGIONAL WATER
QUALITY CONTROL BOARD
895 Aerovista Place, Suite 101
San Luis Obispo, CA 93401-5415

SUBJECT: CAÑON DEL SOL WASTEWATER TREATMENT PLANT
COUNTY SERVICE AREA NO. 5, ANNUAL REPORT
FOR JANUARY THROUGH DECEMBER 2008

Dear Mr. Briggs:

Enclosed is the monitoring data for the reporting period of January through December 2008 for the Cañon Del Sol Wastewater Treatment Plant, County Service Area No. 5. There were no violations of the waste discharge requirements to report during this period. This report is constructed to comply with the Third revised Monitoring and Reporting Program No.97-10-DWQ dated July 28, 2008.

During the year, 1,851,426 gallons were treated at an average of 5,055 gallons per day. Plant effluent was disposed of in the permitted leach fields. Approximately 2,039 pounds of solids were hauled from the plant and disposed of at the County of Santa Cruz Transmission Line Facility at East Cliff.

If you have any questions, please call the undersigned at (831) 477-3907.

Yours truly,

THOMAS L. BOLICH
District Engineer

By:

Scott St. Denis
Treatment Plant Operations Supervisor

SS:rw
Attachment
cds_annual08.wpd

Date: 1/12/09

California Regional Water Quality Control Board
Central Coast Region
Attn: Monitoring and Reporting Review Section
895 Aerovista Place, Suite 101
San Luis Obispo, CA 93401

Dear Mr. Briggs:

Facility Name: Canon Del Sol Waste Water Treatment Plant
County Service Area No. 5

Address: La Selva Beach, CA

Contact Person: Scott St.Denis
Job Title: Chief Plant Operator
Phone Number: (831) 477-3902

WDR/NPDES Order Number: Third Revised Monitoring and Reporting Program
No. 97-10-DWQ WDID No. 3441010001

Type of Report: Annual

Month(s): JAN FEB MAR APR MAY JUN
 JUL AUG SEP OCT NOV DEC

Year: 2008

Violation(s) (Place an X by the appropriate choice): X **No** (there are no violations to report) **Yes**

If yes is marked (complete a-g):

a) Parameter(s) in Violation: _____

b) Section(s) of WDR/NPDES Violated:

.....
.....
.....

c) Reported Value(s)

.....
.....

d) WDR/NPDES Limit/Condition:

.....
.....

e) Date of Violation(s)

(reference page of report/data sheet):

.....
.....

f) Explanation of Cause(s):

(attach additional information as needed)

.....
.....
.....
.....

g) Corrective Action(s):

(attach additional information as needed)

.....
.....
.....
.....

In accordance with the Standard Provisions and Reporting Requirements, I certify under penalty of law that this document and all attachments were prepared under my direction or supervision following a system designed to assure that qualified personnel properly gather and evaluate the information submitted. Based on my knowledge of the person(s) who manage the system, or those directly responsible for data gathering, the information submitted is, to the best of my knowledge and belief, true, accurate, and complete. I am aware that there are significant penalties for submitting false information, including the possibility of fine and imprisonment

If you have any questions or require additional information, please contact me at the number provided above.

Sincerely,



Name: Scott St. Denis
Title: Treatment Plant Operations Supervisor

Regional Water Quality Control Board, Central Coast Region
 Second Revised Monitoring and Reporting Program No. 97-10-DWQ
 WDID No.3 441010001
 Canon Del Sol Wastewater Treatment Facility, Santa Cruz County Service Area No. 5
 Annual Report

January 2008 through December 2008

Flow (measured daily, averaged monthly)

Waste Discharge Requirements- not to exceed 30,000 gallons per day of daily flow

	Average GPD	Total	Highest Daily	Pounds of Solids removed
January-08	5,126	158,900	7,630	273
February-08	4,586	133,000	8,180	265
March-08	4,472	138,630	6,310	0
April-08	4,542	136,270	7,060	293.4
May-08	5,173	160,360	8,340	0
June-08	4,998	149,940	7,230	238
July-08	6,640	205,850	9,943	0
August-08	5,752	178,300	6,650	344
September-08	5,292	158,750	7,840	0
October-08	4,798	148,746	8,300	330
November-08	5,024	150,730	6,050	0
December-08	4,256	131,950	4,750	296

Total gallons processed = 1,851,426

Average daily flow = 5,055

Lbs. of solids removed = 2,039

Effluent Settleable Solids (ml/l, sampled weekly, required weekly)

Waste Discharge Requirements- daily maximum 0.1 ml/l

	Week 1	Week 2	Week 3	Week 4	
January-08	< 0.1	< 0.1	< 0.1	< 0.1	< 0.1
February-08	< 0.1	< 0.1	< 0.1	< 0.1	< 0.1
March-08	< 0.1	< 0.1	< 0.1	< 0.1	< 0.1
April-08	< 0.1	< 0.1	< 0.1	< 0.1	< 0.1
May-08	< 0.1	< 0.1	< 0.1	< 0.1	< 0.1
June-08	< 0.1	< 0.1	< 0.1	< 0.1	< 0.1
July-08	< 0.1	< 0.1	< 0.1	< 0.1	< 0.1
August-08	< 0.1	< 0.1	< 0.1	< 0.1	< 0.1
September-08	< 0.1	< 0.1	< 0.1	< 0.1	< 0.1
October-08	< 0.1	< 0.1	< 0.1	< 0.1	< 0.1
November-08	0.048	0.0875	< 0.1	< 0.1	< 0.1
December-08	0.08	< 0.1	< 0.1	< 0.1	< 0.1

Total Suspended Solids (mg/l measured monthly, required monthly)

Waste Discharge Requirements- quarterly average 50mg/l, daily maximum 75mg/l

	Influent	Effluent	% Reduction
January-08	190	ND	99
February-08	200	3.6	98.2
March-08	230	20	91.3
April-08	300	9.6	96.8
May-08	290	2	99.3
June-08	190	12	93.7
July-08	370	ND	99
August-08	230	9	96
September-08	370	5.8	98.4
October-08	280	3.6	98.7
November-08	180	3.8	97.9
December-08	230	2.6	98.8

pH (measured monthly, required semi-annually)

Waste Discharge Requirements- not less than 6.5 or greater than 8.4

January-08	7.4
February-08	7.2
March-08	6.5
April-08	7.4
May-08	7.9
June-08	7.4
July-08	7.6
August-08	6.7
September-08	7.2
October-08	7.2
November-08	7.4
December-08	7.1

Effluent Nitrate as NO₃-N (mg/l, measured monthly, required annually)

January-08	32
February-08	38
March-08	44
April-08	37
May-08	41
June-08	42
July-08	39
August-08	41
September-08	44
October-08	43
November-08	38
December-08	41

Effluent Total Nitrogen (mg/l measured monthly, required semi-annually)

January-08	17
February-08	21
March-08	47
April-08	91
May-08	42
June-08	44
July-08	40
August-08	42
September-08	46
October-08	45
November-08	39
December-08	42

Effluent Chloride (mg/l measured monthly, required semi-annually)

January-08	89
February-08	81
March-08	56
April-08	75
May-08	71
June-08	81
July-08	82
August-08	76
September-08	93
October-08	74
November-08	79
December-08	77

In accordance with the Standard Provisions and Reporting Requirements, I certify under penalty of law that this document and all attachments were prepared under my direction or supervision following a system designed to assure that qualified personnel properly gather and evaluate the information submitted. Based on my knowledge of the person(s) who manage the system, or those directly responsible for data gathering, the information submitted is, to the best of my knowledge and belief, true, accurate, and complete. I am aware that there are significant penalties for submitting false information, including the possibility of fine and imprisonment

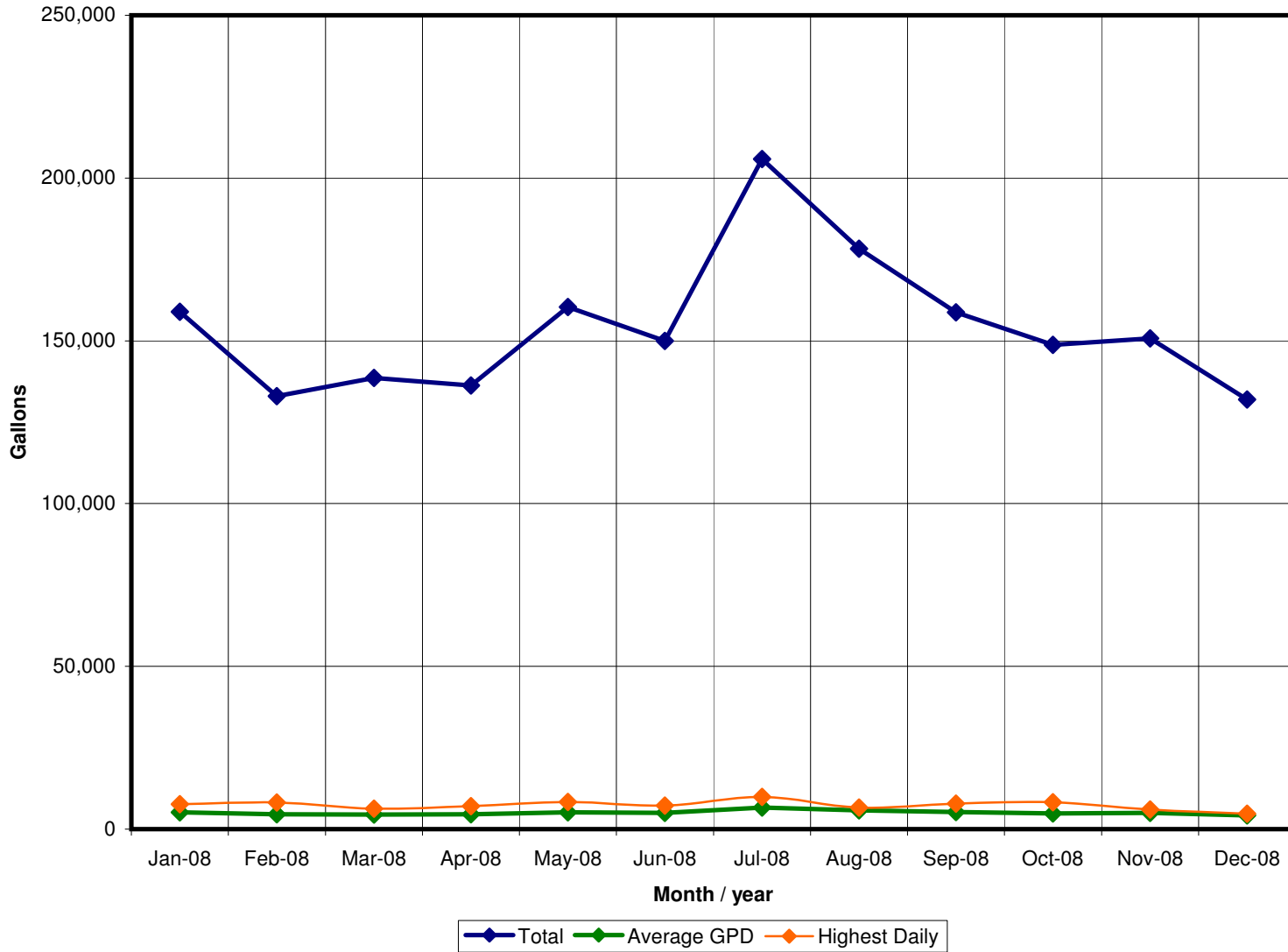
If you have any questions or require additional information, please contact me at the number provided above.

Sincerely,

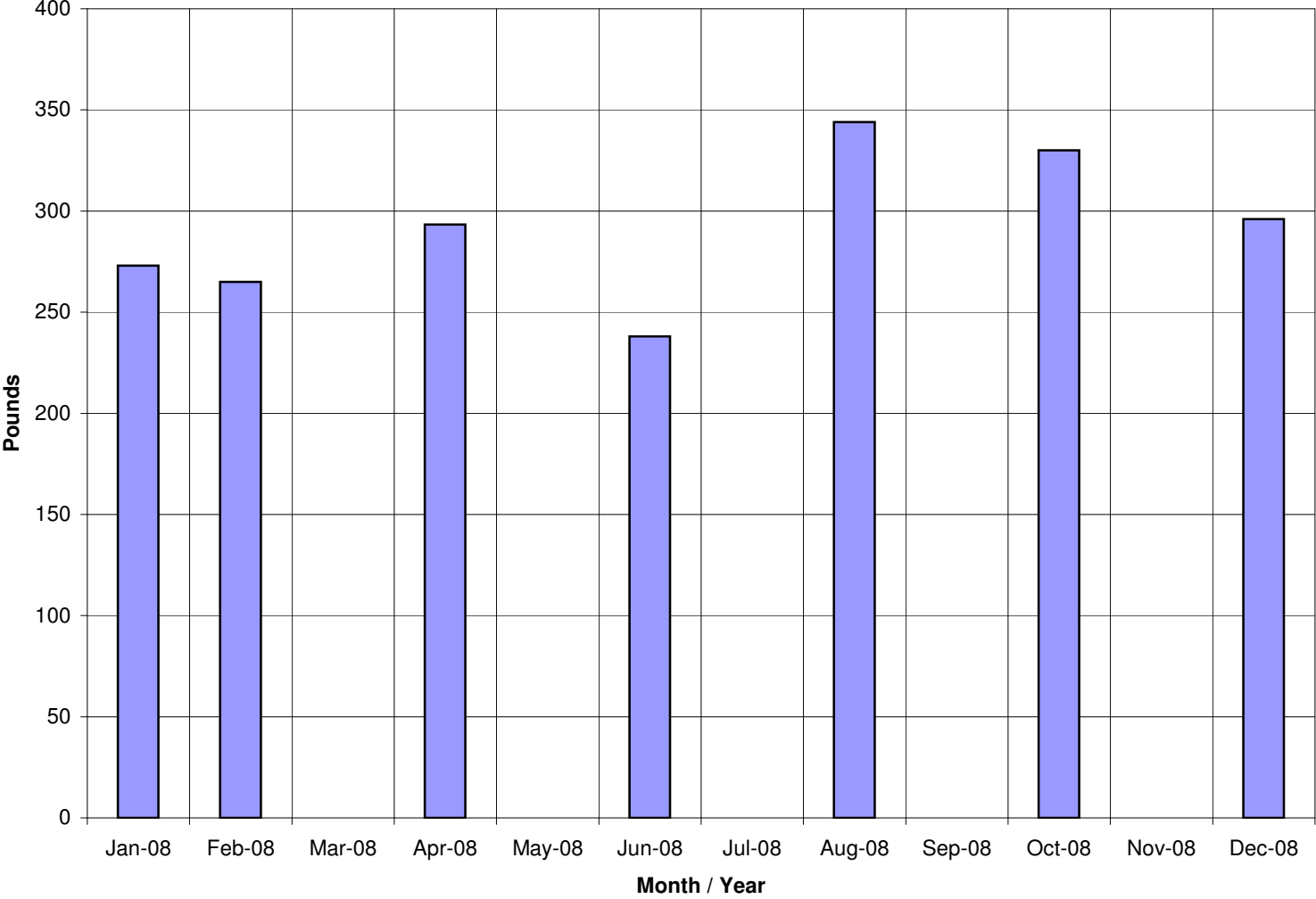


Name: Scott St. Denis
Title: Treatment Plant Operations Supervisor

Canon Del Sol Flows



Solids Removed



■ Solids Removed

Data Chart

